

M.N.S
REAL ESTATE
NYC

MANHATTAN RENTAL MARKET REPORT

MAY 2026



CONTENTS

- INTRODUCTION 4
- A QUICK LOOK 5
 - NOTABLE PRICE TRENDS 6
 - PRICE DECREASE7
 - PRICE INCREASE 8
- MEAN MANHATTAN RENTAL PRICES.....9
- NEIGHBORHOOD PRICE TRENDS14
 - BATTERY PARK CITY15
 - CHELSEA16
 - EAST VILLAGE.....17
 - FINANCIAL DISTRICT.....18
 - GRAMERCY PARK19
 - GREENWICH VILLAGE.....20
 - HARLEM.....21
 - LOWER EAST SIDE.....22
 - MIDTOWN EAST.....23
 - MIDTOWN WEST.....24
 - MURRAY HILL.....25
 - SOHO.....26
 - TRIBECA.....27
 - UPPER EAST SIDE.....28
 - UPPER WEST SIDE.....29
 - WASHINGTON HEIGHTS/ INWOOD.....30
- THE REPORT EXPLAINED.....31

AVERAGE RENT

THE AVERAGE RENT IN MANHATTAN HAS INCREASED THIS MONTH.

MANHATTAN

↑1.43%
CHANGE

\$5,181
APRIL 2026

\$5,255
MAY 2026

A QUICK LOOK

MANHATTAN

Over the last month, the average rental price in Manhattan increased by 1.43%, from \$5,181 to \$5,255. The average rental price for a non-doorman studio unit increased by 3.26%, from \$3,186 to \$3,290. The average rental price for a non-doorman one-bedroom unit increased by 0.83%, from \$4,274 to \$4,310. The average rental price for a non-doorman two-bedroom unit increased by 1.29%, from \$5,573 to \$5,645. The average rental price for a doorman studio unit increased by 0.77%, from \$4,446 to \$4,480. The average rental price for a one-bedroom doorman unit increased by 2.52%, from \$5,696 to \$5,840. The average rental price for a doorman two-bedroom unit increased by 0.33%, from \$7,546 to \$7,571.

Year-over-year, the average rental price for a non-doorman studio increased by 7.34%, and the average rental price for a doorman studio increased by 3.19%. The average rental price for a non-doorman one-bedroom unit increased by 7.21%, and doorman one-bedroom units saw their average rental price increase by 0.44%. The average rental price for a non-doorman two-bedroom unit increased by 6.79%, while the average rental price for doorman two-bedroom units increased by 2.95%. Overall, the average rental price in Manhattan increased by 4.13% from this time last year.

NOTABLE TRENDS

MANHATTAN

TYPE	MOST EXPENSIVE	LEAST EXPENSIVE
Non-doorman studios	Gramercy \$4,019	Washington Heights/ Inwood \$2,354
Non-doorman one bedrooms	TriBeCa \$5,547	Washington Heights/ Inwood \$2,734
Non-doorman two bedrooms	TriBeCa \$9,725	Washington Heights/ Inwood \$3,371

TYPE	MOST EXPENSIVE	LEAST EXPENSIVE
Doorman studios	SoHo \$6,595	Washington Heights/ Inwood \$2,975
Doorman one bedrooms	SoHo \$8,275	Washington Heights/ Inwood \$3,257
Doorman two bedrooms	Greenwich Village \$9,400	Harlem \$4,834

WHERE PRICES DECREASED



BATTERY PARK CITY

Doorman Two-Bedroom -2.78%

CHELSEA

Non-Doorman One-Bedroom -4.95%

Doorman Studios -1.03%

EAST VILLAGE

Doorman Studios -3.35%

Doorman Two-Bedroom -1.43%

FINANCIAL DISTRICT

Non-Doorman One-Bedroom -7.04%

Non-Doorman Two-Bedroom -8.03%

Doorman Two-Bedroom -9.13%

GRAMERCY

Non-Doorman One-Bedroom -6.37%

Doorman Studios -1.33%

Doorman One-Bedroom -1.22%

Doorman Two-Bedroom -2.37%

GREENWICH VILLAGE

Non-Doorman Studios -3.76%

HARLEM

Doorman Two-Bedroom -0.23%

LOWER EAST SIDE

Doorman Studios -1.24%

Doorman One-Bedroom -1.07%

MIDTOWN EAST

Non-Doorman One-Bedroom -5.65%

Doorman Studios -1.58%

Doorman One-Bedroom -1.06%

MIDTOWN WEST

Non-Doorman Two-Bedroom -4.92%

Doorman Studios -0.42%

Doorman Two-Bedroom -1.80%

MURRAY HILL

Doorman Two-Bedroom -1.99%

SOHO

Non-Doorman One-Bedroom -0.21%

TRIBECA

Doorman Studios -0.30%

UPPER EAST SIDE

Doorman Two-Bedroom -1.26%

WASHINGTON HEIGHTS / INWOOD

Non-Doorman One-Bedroom -1.16%

Doorman Studios -0.83%

WHERE PRICES INCREASED



BATTERY PARK CITY

Doorman Studios	7.88%
Doorman One-Bedroom	7.35%

CHELSEA

Non-Doorman Studios	8.29%
Non-Doorman Two-Bedroom	2.97%
Doorman One-Bedroom	0.39%
Doorman Two-Bedroom	2.03%

EAST VILLAGE

Non-Doorman Studios	1.87%
Non-Doorman One-Bedroom	7.83%
Non-Doorman Two-Bedroom	2.91%
Doorman One-Bedroom	1.91%

FINANCIAL DISTRICT

Non-Doorman Studios	0.00%
Doorman Studios	2.27%
Doorman One-Bedroom	4.31%

GRAMERCY

Non-Doorman Studios	3.71%
Non-Doorman Two-Bedroom	3.08%

GREENWICH VILLAGE

Non-Doorman One-Bedroom	6.33%
Non-Doorman Two-Bedroom	4.30%
Doorman Studios	0.84%
Doorman One-Bedroom	6.22%
Doorman Two-Bedroom	4.44%

HARLEM

Non-Doorman Studios	8.77%
Non-Doorman One-Bedroom	2.18%
Non-Doorman Two-Bedroom	1.03%
Doorman Studios	3.13%
Doorman One-Bedroom	5.05%

LOWER EAST SIDE

Non-Doorman Studios	5.45%
Non-Doorman One-Bedroom	5.63%
Non-Doorman Two-Bedroom	1.76%
Doorman Two-Bedroom	5.55%

MIDTOWN EAST

Non-Doorman Studios	1.53%
Non-Doorman Two-Bedroom	0.54%
Doorman Two-Bedroom	0.67%

MIDTOWN WEST

Non-Doorman Studios	5.37%
Non-Doorman One-Bedroom	2.90%
Doorman One-Bedroom	4.82%

MURRAY HILL

Non-Doorman Studios	4.25%
Non-Doorman One-Bedroom	3.22%
Non-Doorman Two-Bedroom	5.52%
Doorman Studios	2.51%
Doorman One-Bedroom	1.11%

SOHO

Non-Doorman Studios	4.34%
Non-Doorman Two-Bedroom	1.34%
Doorman Studio	0.00%
Doorman One-Bedroom	5.75%
Doorman Two-Bedroom	0.00%

TRIBECA

Non-Doorman Studios	0.00%
Non-Doorman One-Bedroom	2.81%
Non-Doorman Two-Bedroom	2.37%
Doorman One-Bedroom	1.37%
Doorman Two-Bedroom	3.98%

UPPER EAST SIDE

Non-Doorman Studios	4.74%
Non-Doorman One-Bedroom	5.03%
Non-Doorman Two-Bedroom	1.25%
Doorman Studios	1.03%
Doorman One-Bedroom	2.49%

UPPER WEST SIDE

Non-Doorman Studios	5.56%
Non-Doorman One-Bedroom	4.00%
Non-Doorman Two-Bedroom	2.88%
Doorman Studios	4.73%
Doorman One-Bedroom	0.25%
Doorman Two-Bedroom	5.24%

WASHINGTON HEIGHTS / INWOOD

Non-Doorman Studios	0.96%
Non-Doorman Two-Bedroom	3.42%
Doorman One-Bedroom	3.53%
Doorman Two-Bedroom	4.80%

MANHATTAN AVERAGE PRICE

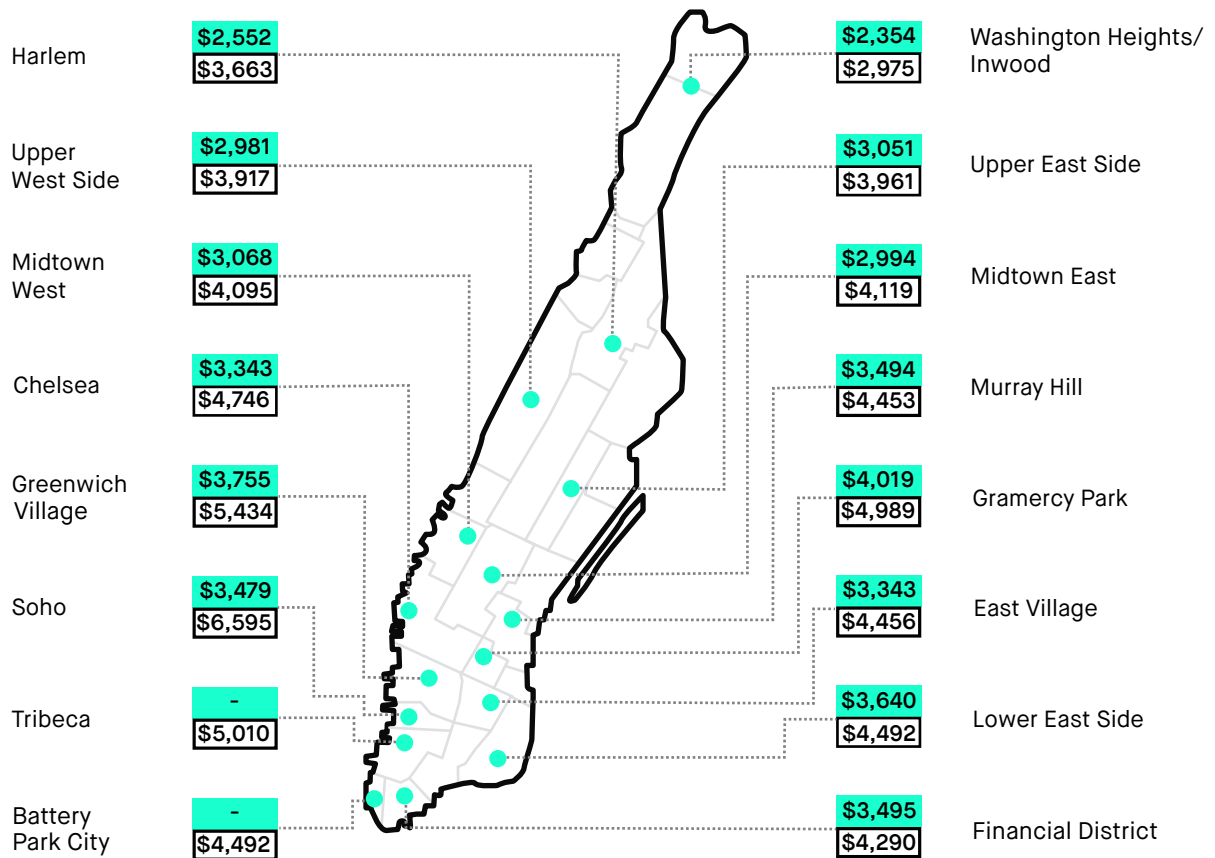
STUDIOS



\$4,480
DOORMAN



\$3,290
NON-DOORMAN



MANHATTAN AVERAGE PRICE

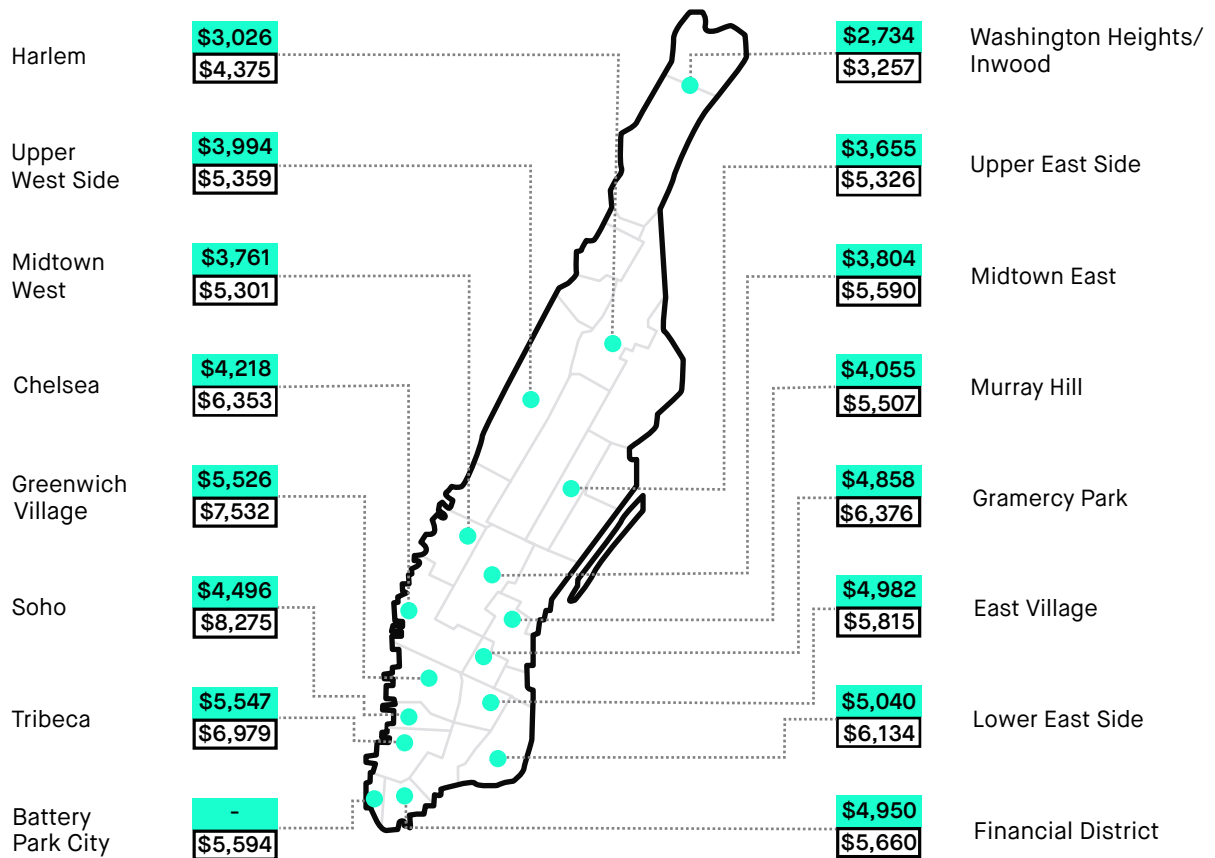
1 BEDROOM



\$5,840
DOORMAN



\$4,310
NON-DOORMAN



MANHATTAN AVERAGE PRICE

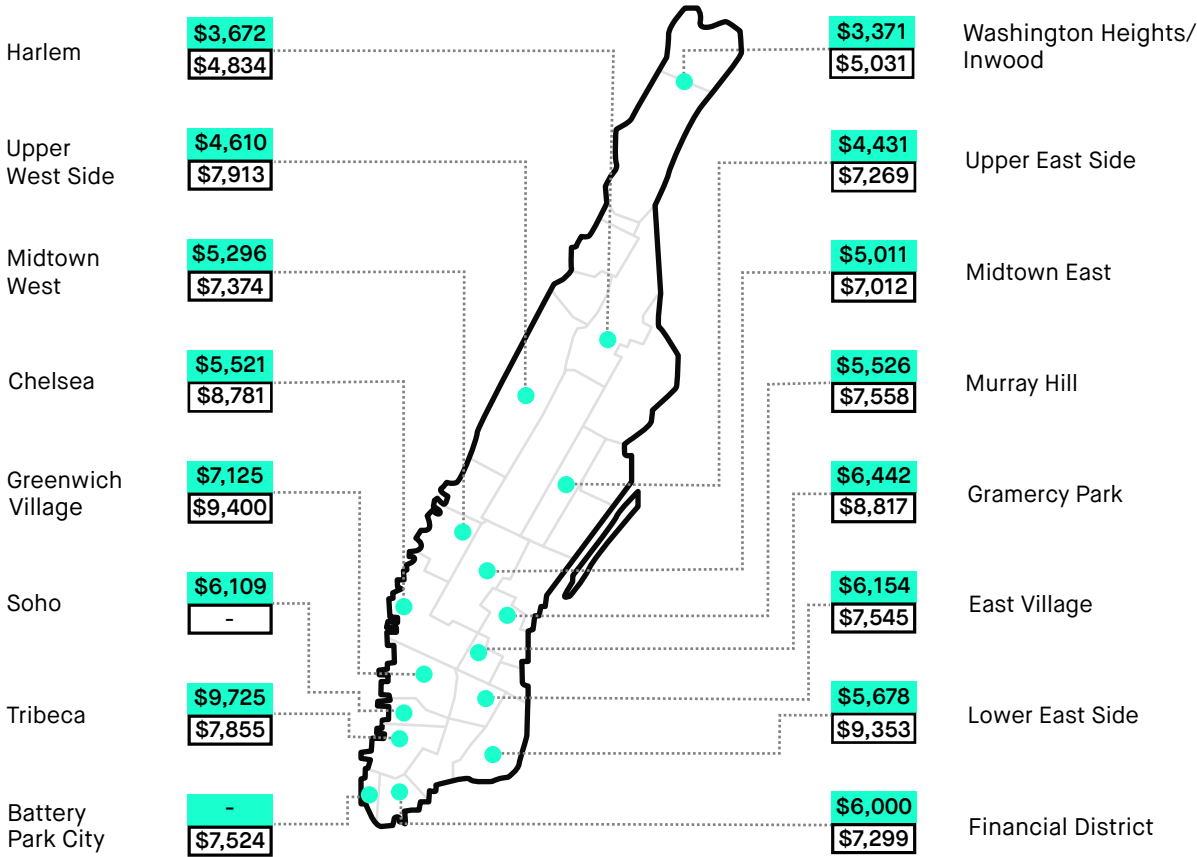
2 BEDROOM



\$7,571
DOORMAN



\$5,645
NON-DOORMAN



A QUICK LOOK

CHANGE BY NEIGHBORHOOD

YEAR OVER YEAR

BATTERY PARK CITY	↑ 2.82%	GREENWICH VILLAGE	↑ 12.33%	MURRAY HILL	↑ 10.02%
CHELSEA	↑ 3.02%	HARLEM	↑ 8.92%	SOHO	↑ 6.40%
EAST VILLAGE	↑ 4.43%	LOWER EAST SIDE	↑ 12.58%	TRIBECA	↑ 10.08%
FINANCIAL DISTRICT	↑ 3.53%	MIDTOWN EAST	↑ 8.01%	UPPER EAST SIDE	↓ 0.98%
GRAMERCY	↑ 15.83%	MIDTOWN WEST	↑ 7.21%	UPPER WEST SIDE	↓ 3.70%

PRICE CHANGES

MANHATTAN RENTS:
MAY 2025 VS. MAY 2026

PRICE CHANGES

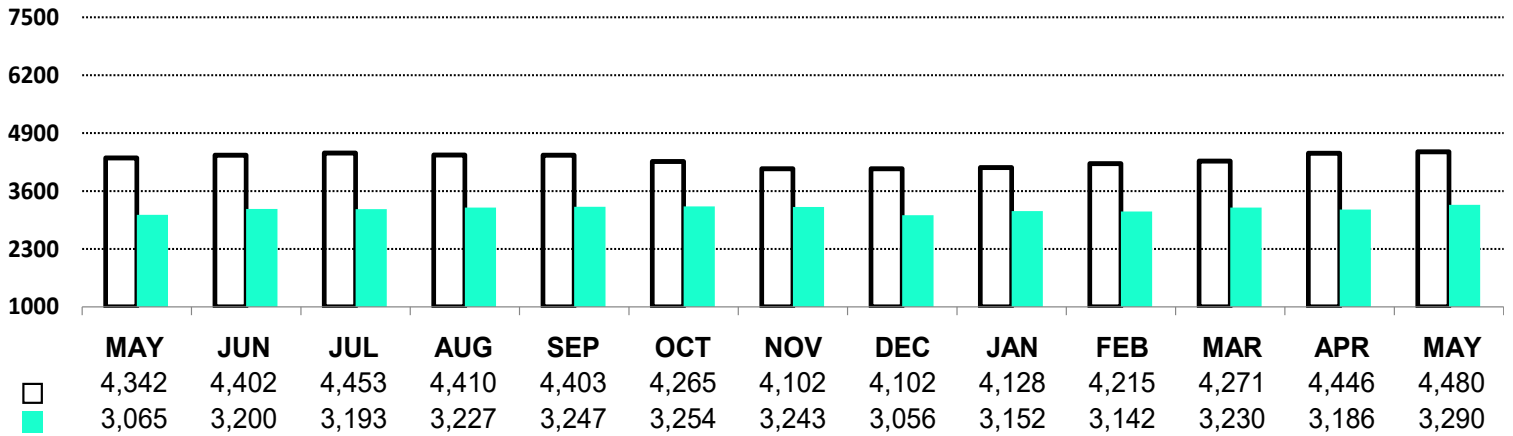
TYPE	MAY 2025	MAY 2026	CHANGE
Non-doorman studios	\$3,065	\$3,290	↑ 7.34%
Non-doorman one bedrooms	\$4,020	\$4,310	↑ 7.21%
Non-doorman two bedrooms	\$5,286	\$5,645	↑ 6.79%

TYPE	MAY 2025	MAY 2026	CHANGE
Doorman studios	\$4,342	\$4,480	↑ 3.19%
Doorman one bedrooms	\$5,814	\$5,840	↑ 0.44%
Doorman two bedrooms	\$7,354	\$7,571	↑ 2.95%

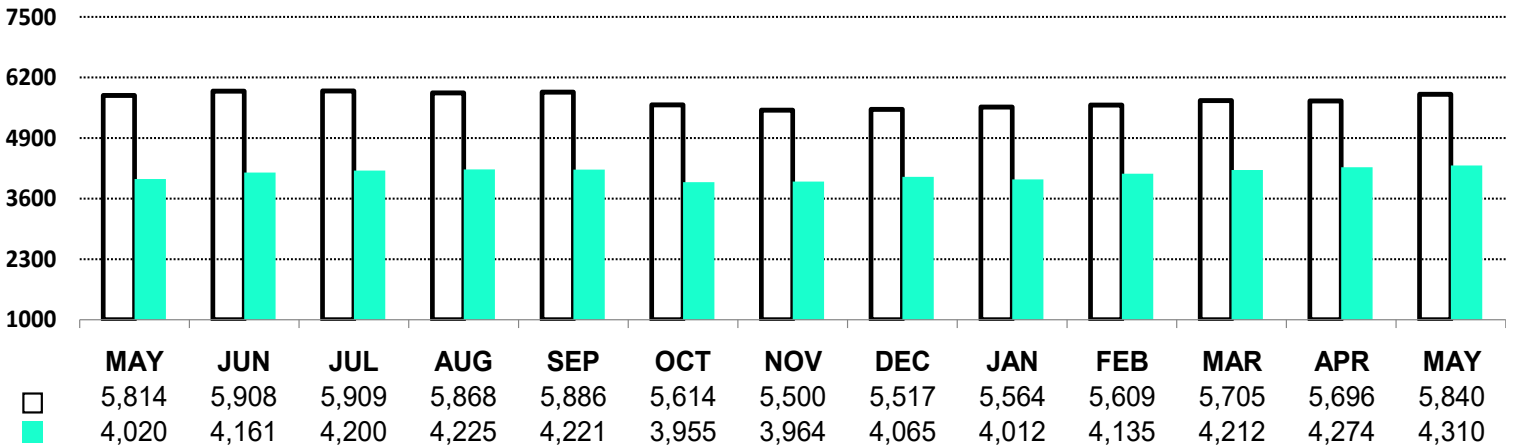
PRICE TRENDS: MANHATTAN

MANHATTAN STUDIO PRICE TRENDS OVER 13 MONTHS

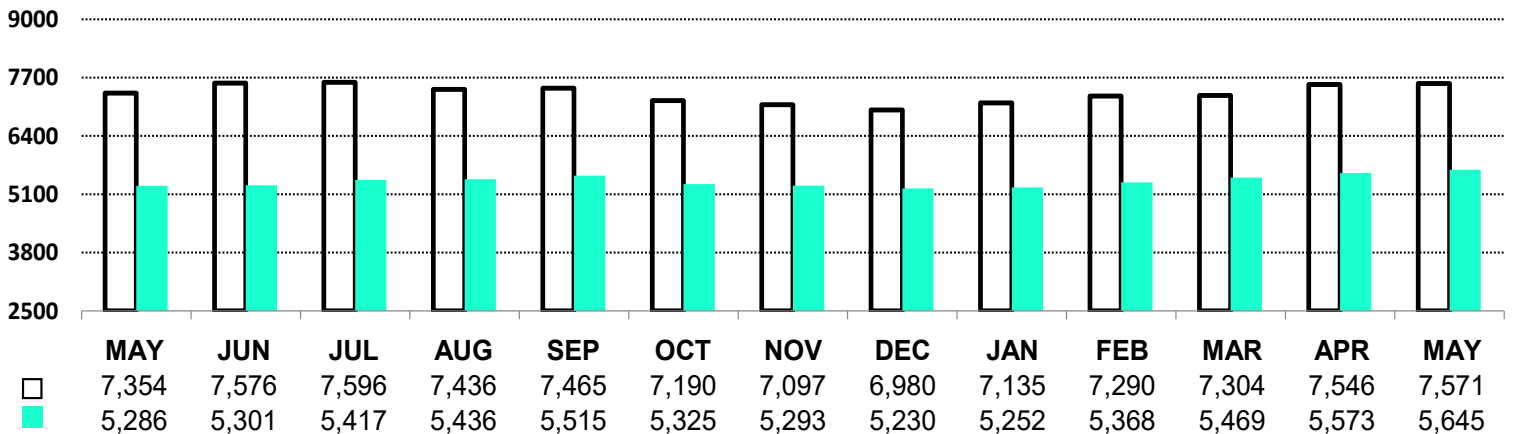
□ DOORMAN
■ NON DOORMAN



MANHATTAN ONE-BEDROOM PRICE TRENDS OVER 13 MONTHS



MANHATTAN TWO-BEDROOM PRICE TRENDS OVER 13 MONTHS

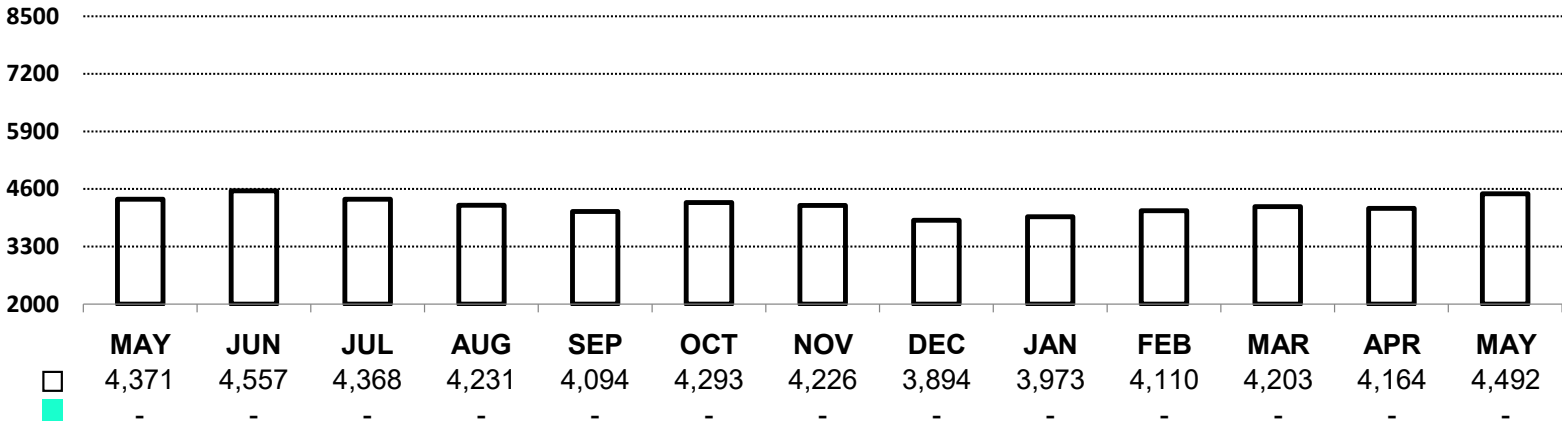


PRICE TRENDS: BATTERY PARK CITY

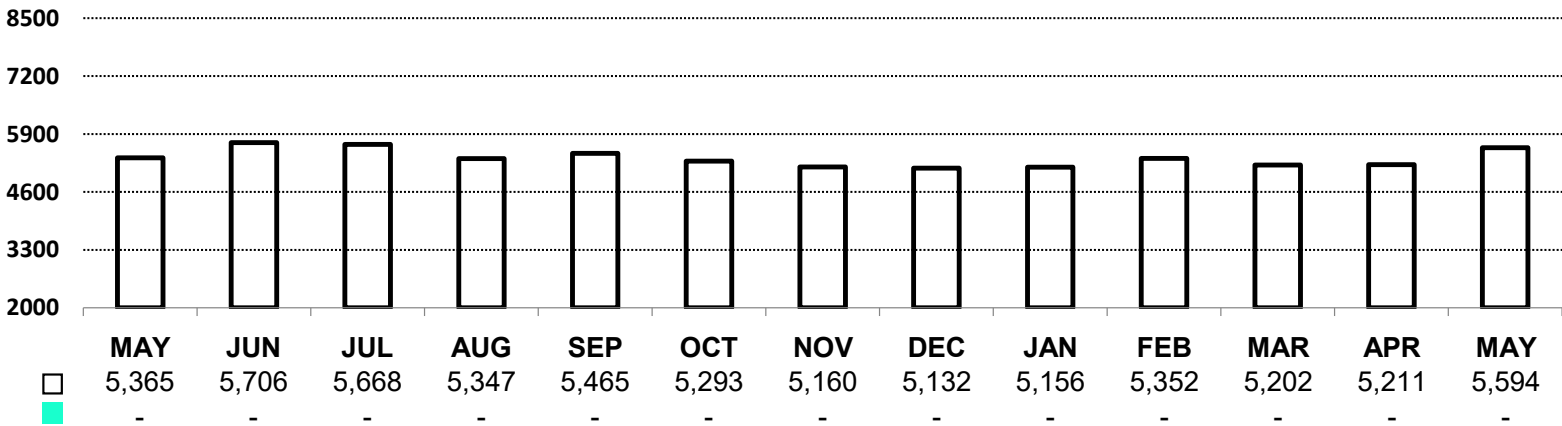
THE AVERAGE RENTAL PRICE IN BATTERY PARK CITY INCREASED BY 2.90%.

BATTERY PARK CITY STUDIO PRICE TRENDS OVER 13 MONTHS

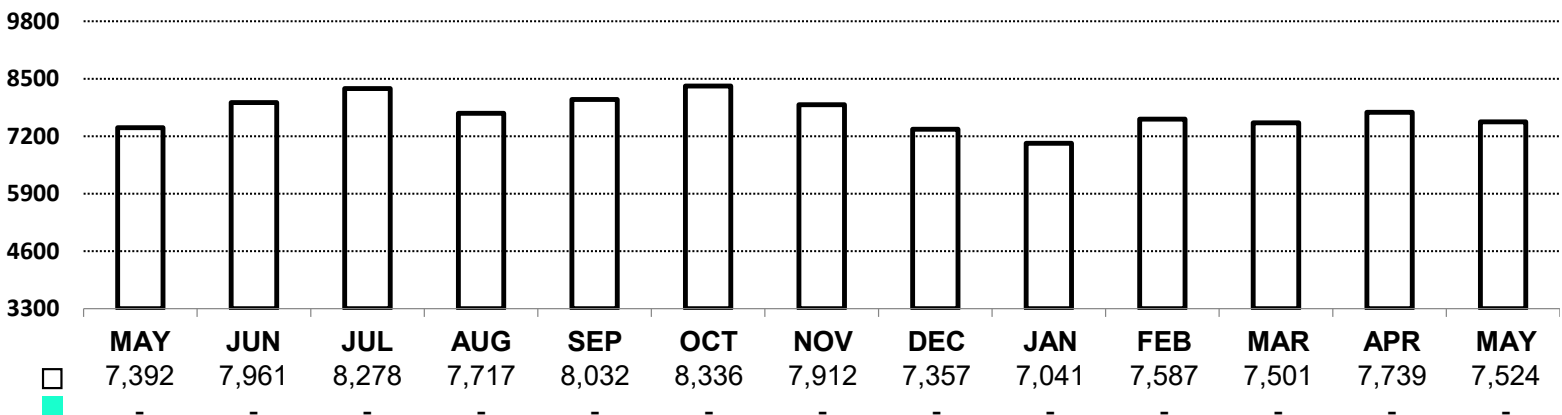
□ DOORMAN
■ NON DOORMAN



BATTERY PARK CITY ONE-BEDROOM PRICE TRENDS OVER 13 MONTHS



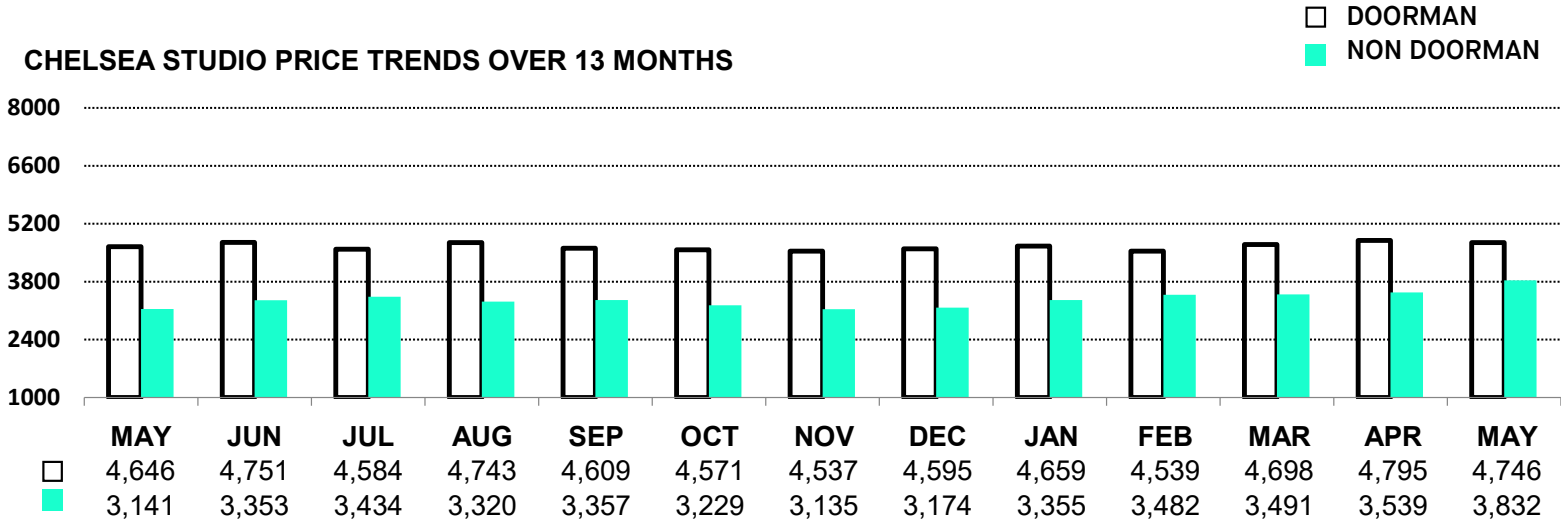
BATTERY PARK CITY TWO-BEDROOM PRICE TRENDS OVER 13 MONTHS



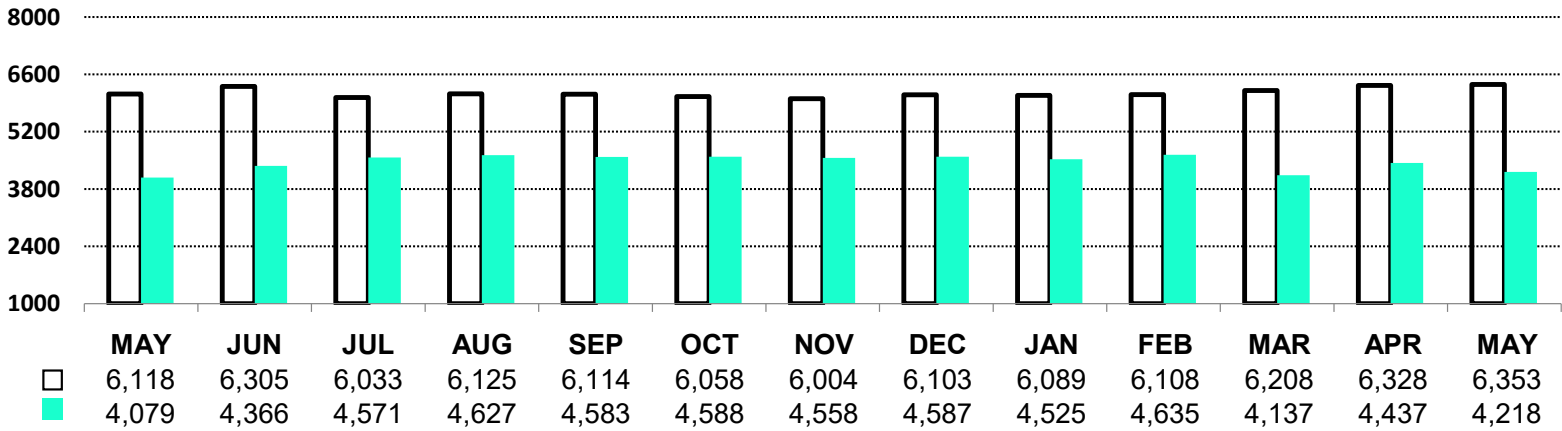
PRICE TRENDS: CHELSEA

MONTH-OVER-MONTH, AVERAGE DOORMAN RENTAL PRICES
HAVE SLIGHTLY INCREASED BY JUST 0.76%,
AND NON-DOORMAN RENTS INCREASED BY 1.75%.

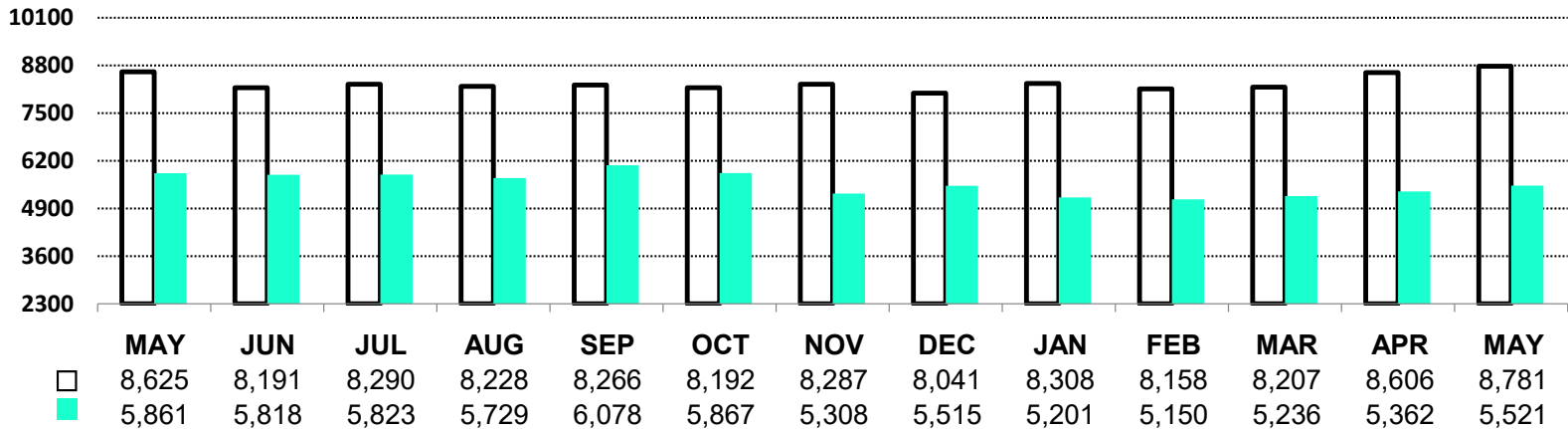
CHELSEA STUDIO PRICE TRENDS OVER 13 MONTHS



CHELSEA ONE-BEDROOM PRICE TRENDS OVER 13 MONTHS



CHELSEA TWO-BEDROOM PRICE TRENDS OVER 13 MONTHS

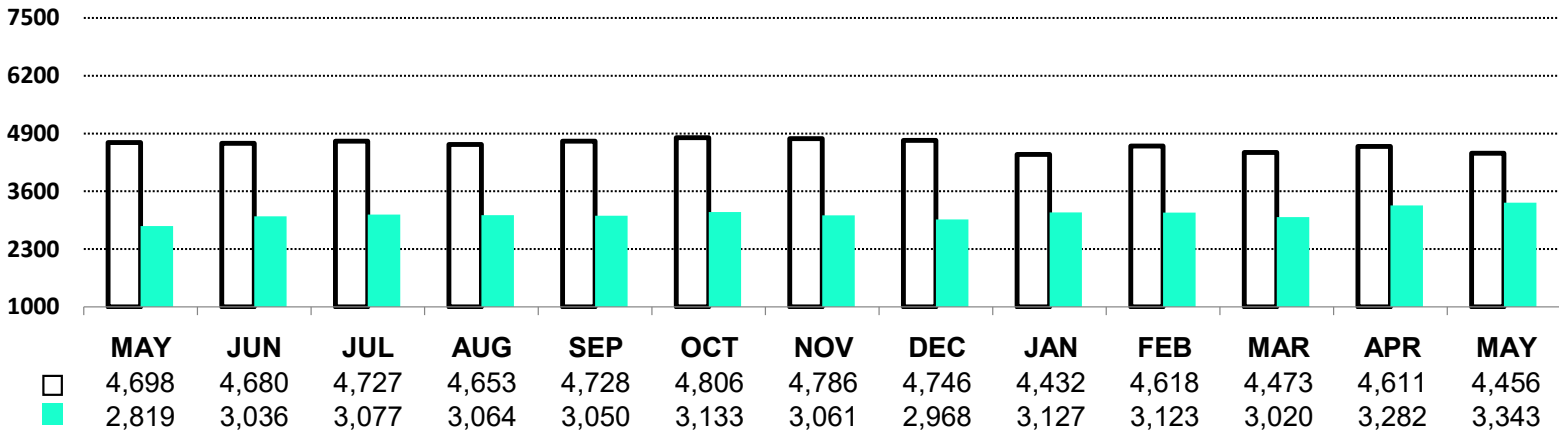


PRICE TRENDS: EAST VILLAGE

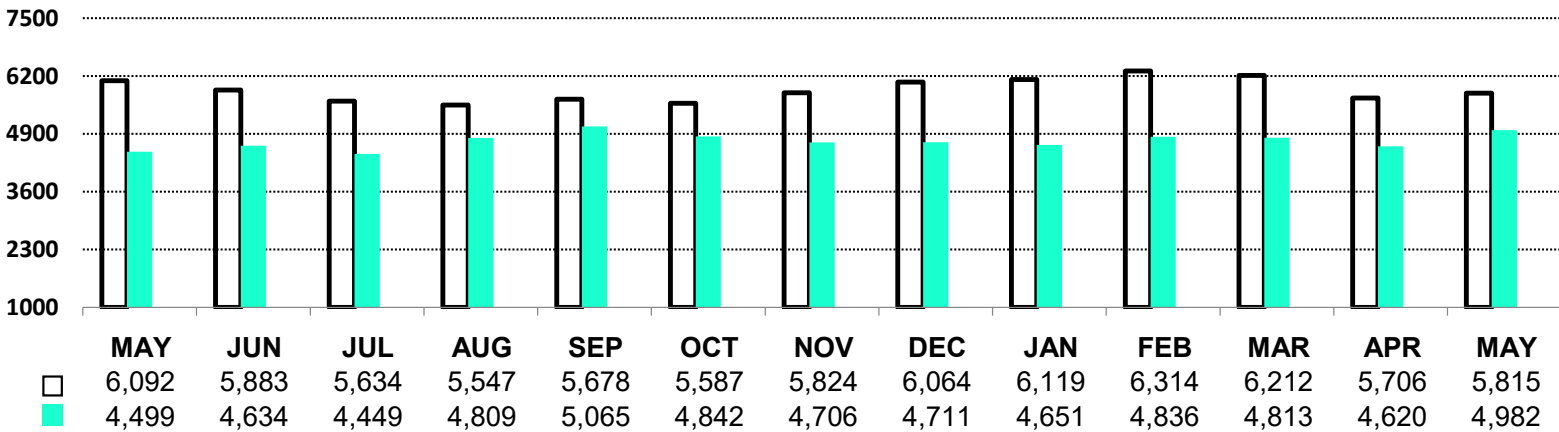
DOORMAN RENTS SLIGHTLY DECREASED THIS PAST MONTH BY JUST 0.86%, WHILE NON-DOORMAN RENTS INCREASED BY 4.29%.

EAST VILLAGE STUDIO PRICE TRENDS OVER 13 MONTHS

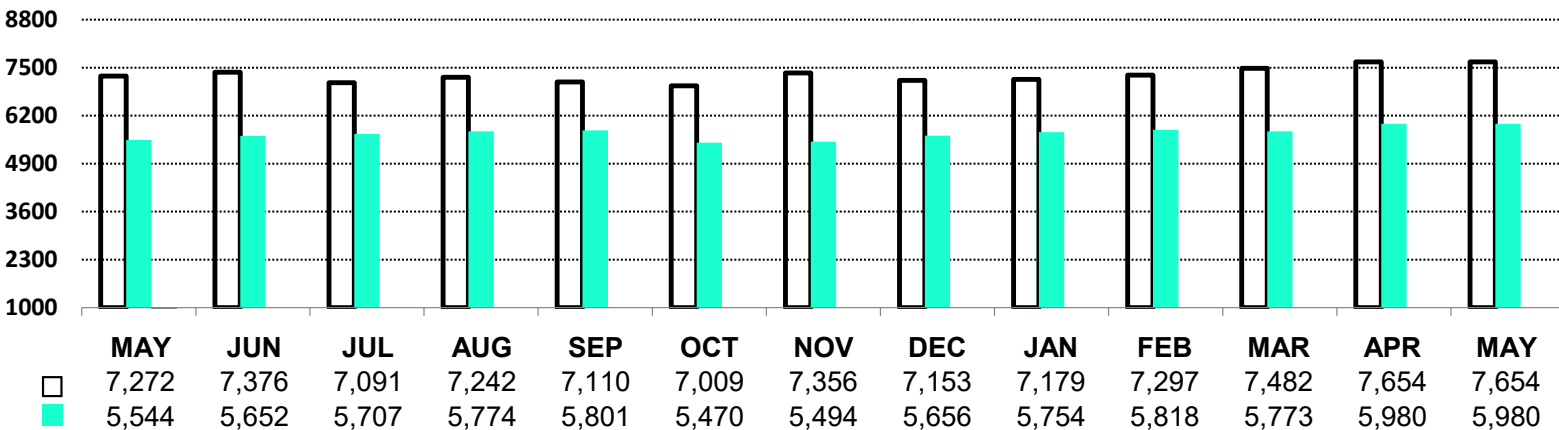
□ DOORMAN
■ NON DOORMAN



EAST VILLAGE ONE-BEDROOM PRICE TRENDS OVER 13 MONTHS



EAST VILLAGE TWO-BEDROOM PRICE TRENDS OVER 13 MONTHS

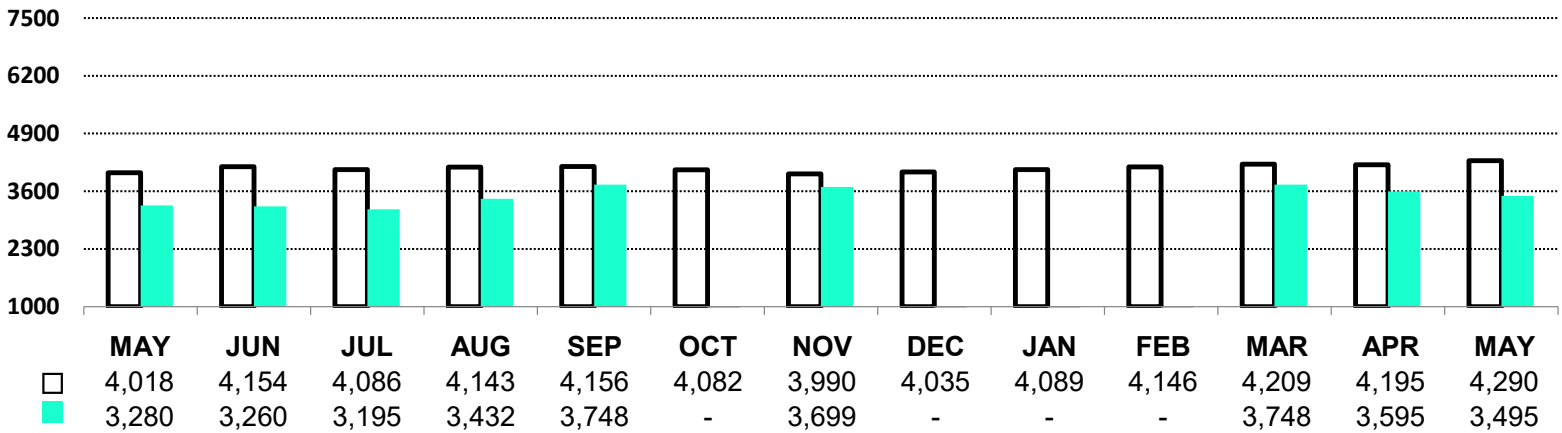


PRICE TRENDS: FINANCIAL DISTRICT

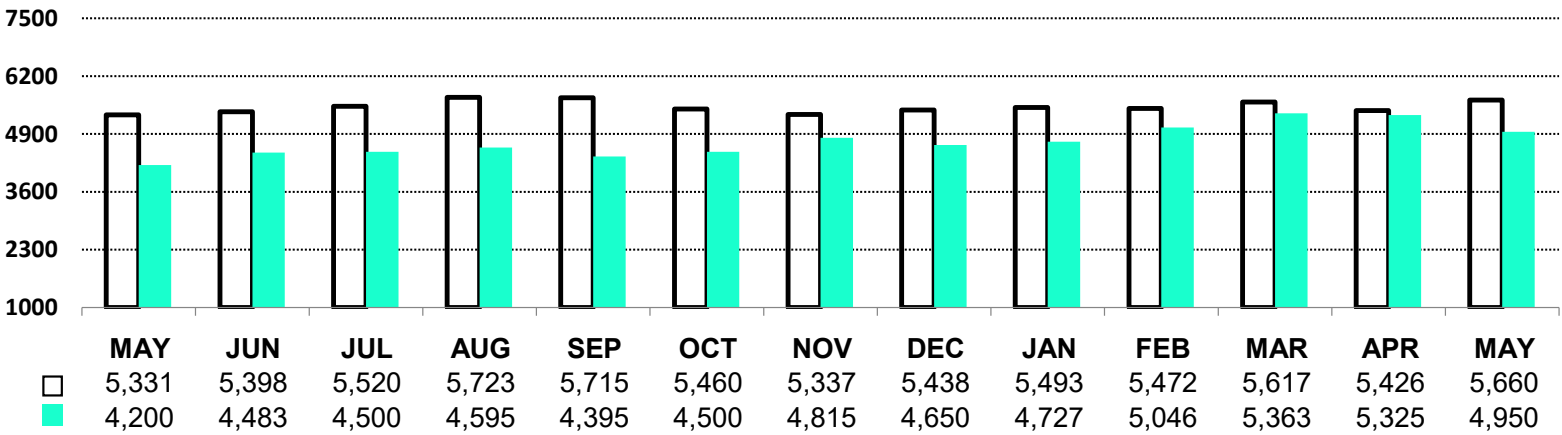
THE AVERAGE RENTAL DOORMAN PRICE DECREASED THIS PAST MONTH BY 2.29%, AND NON-DOORMAN RENTS DECREASED BY 6.47%.

FINANCIAL DISTRICT STUDIO PRICE TRENDS OVER 13 MONTHS

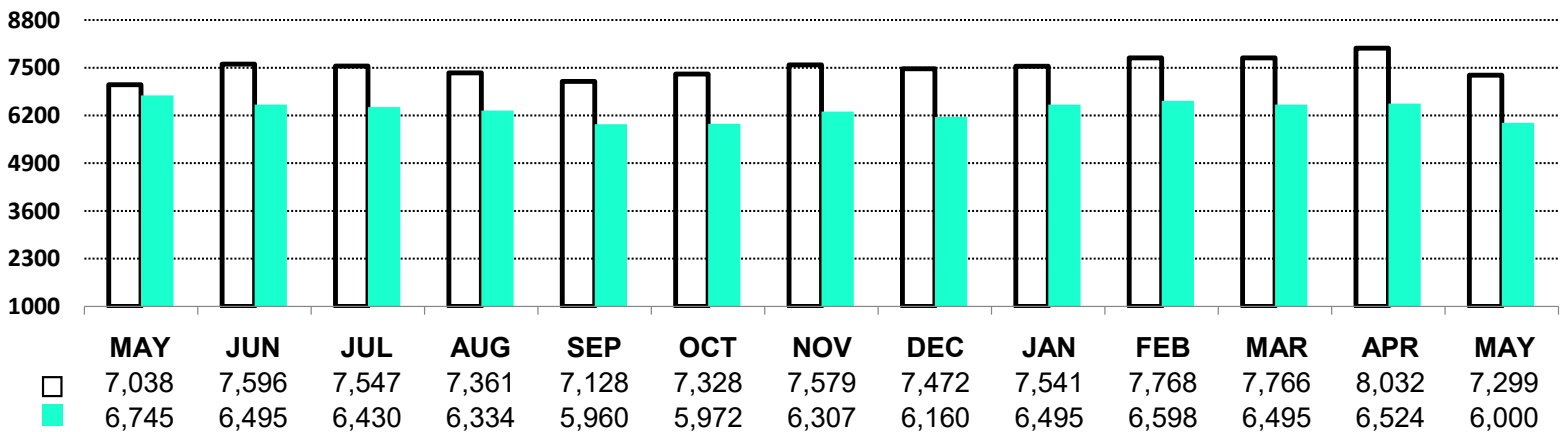
□ DOORMAN
■ NON DOORMAN



FINANCIAL DISTRICT ONE-BEDROOM PRICE TRENDS OVER 13 MONTHS



FINANCIAL DISTRICT TWO-BEDROOM PRICE TRENDS OVER 13 MONTHS

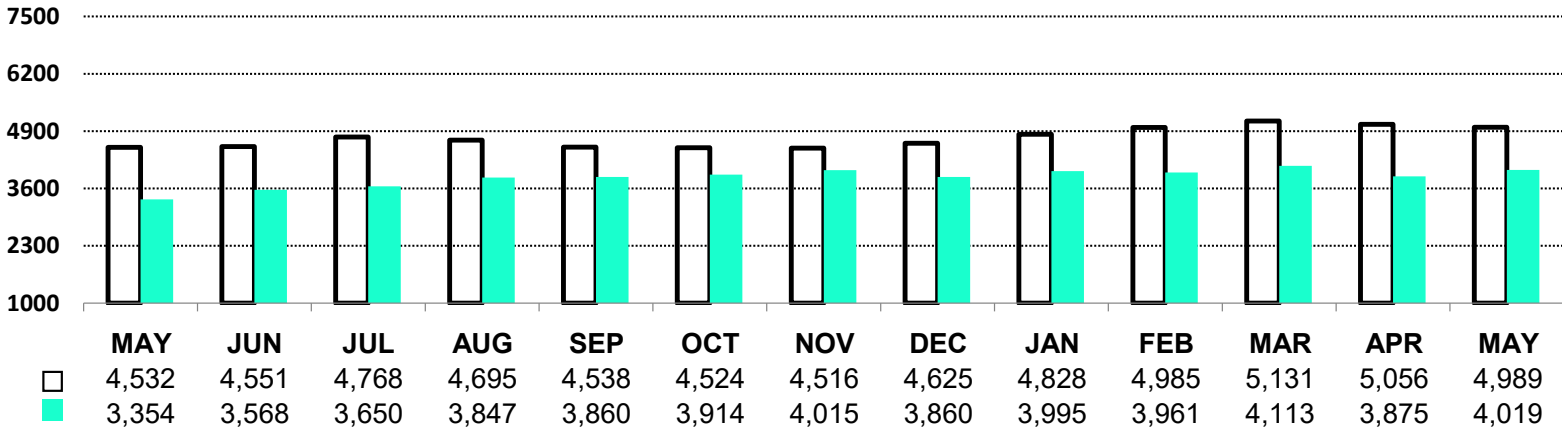


PRICE TRENDS: GRAMERCY PARK

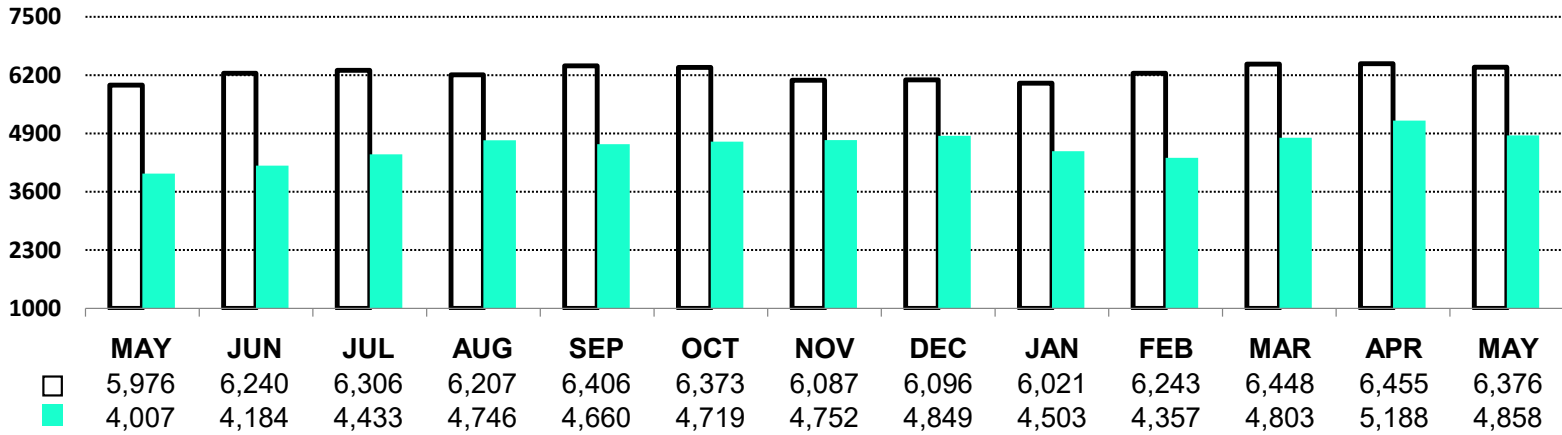
THIS PAST MONTH, THE AVERAGE DOORMAN RENTS DECREASED BY 1.75%, WHILE NON-DOORMAN RENTS SLIGHTLY INCREASED BY JUST 0.04%.

GRAMERCY PARK STUDIO PRICE TRENDS OVER 13 MONTHS

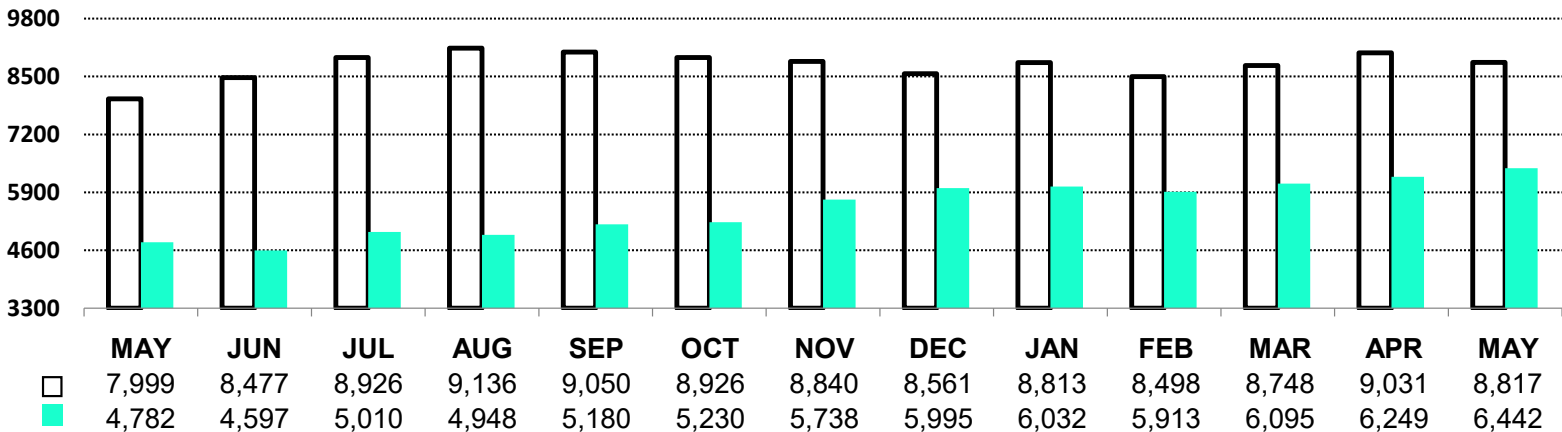
□ DOORMAN
■ NON DOORMAN



GRAMERCY PARK ONE-BEDROOM PRICE TRENDS OVER 13 MONTHS



GRAMERCY PARK TWO-BEDROOM PRICE TRENDS OVER 13 MONTHS

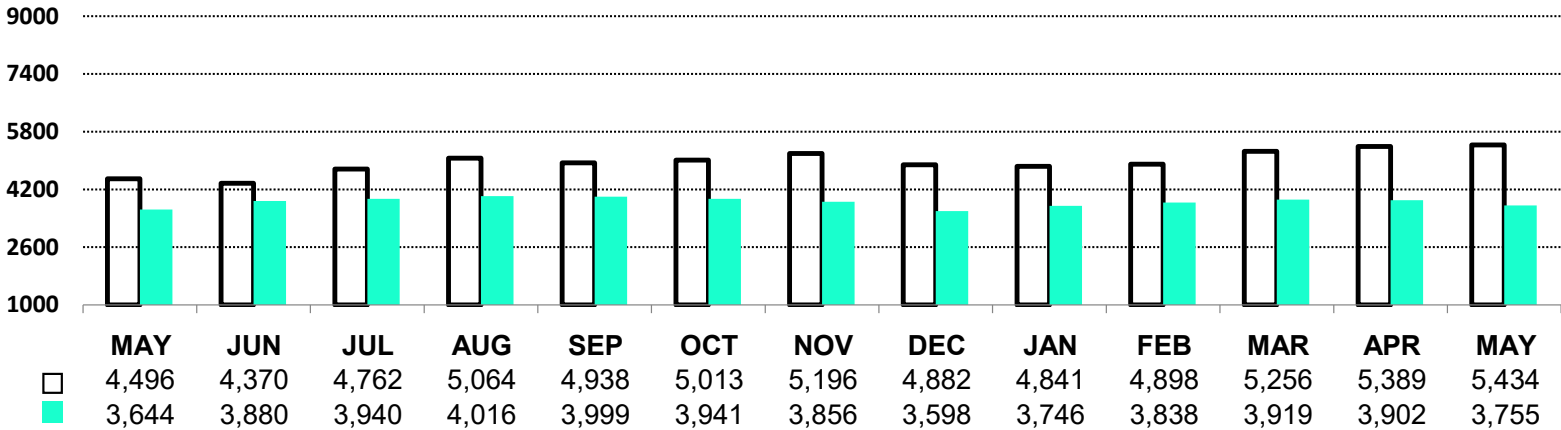


PRICE TRENDS: GREENWICH VILLAGE

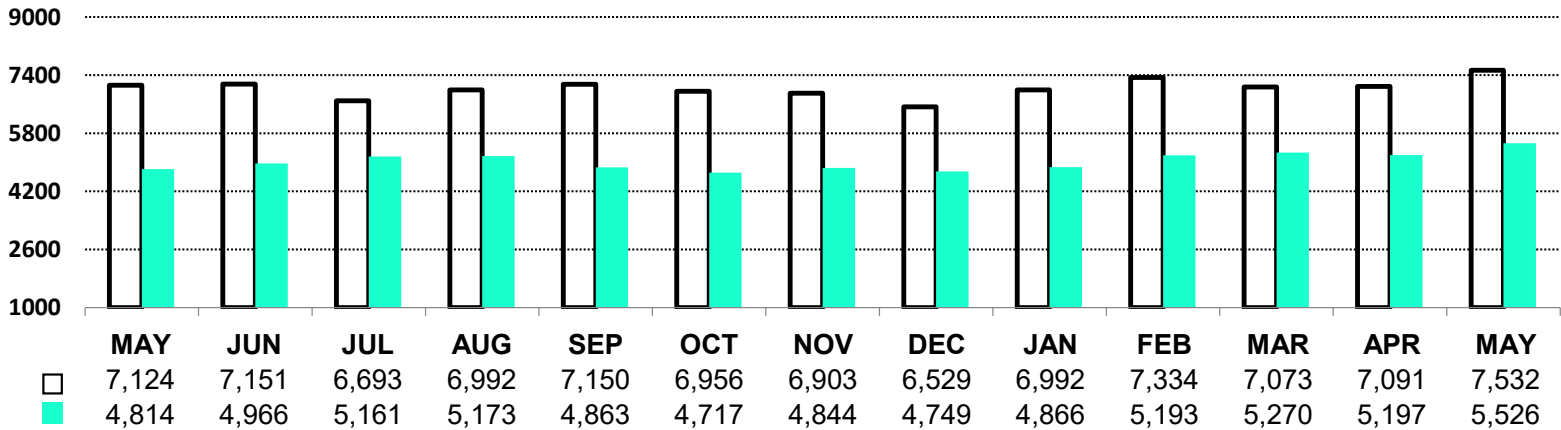
DOORMAN RENTS INCREASED BY 4.13% THIS PAST MONTH,
AND NON-DOORMAN RENTS INCREASED BY 2.99%.

GREENWICH VILLAGE STUDIO PRICE TRENDS OVER 13 MONTHS

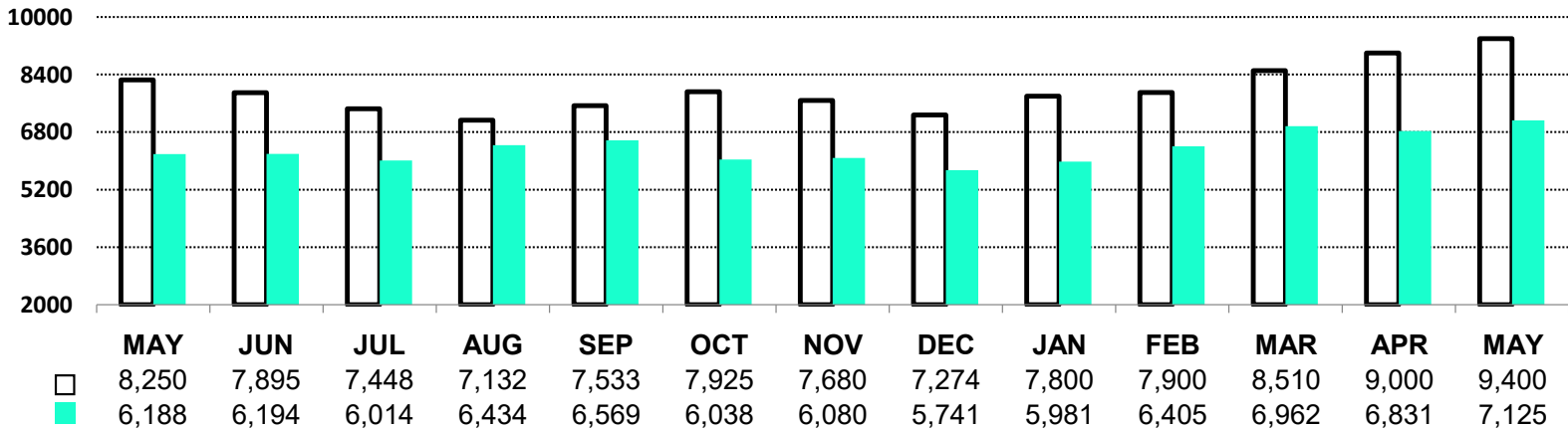
□ DOORMAN
■ NON DOORMAN



GREENWICH VILLAGE ONE-BEDROOM PRICE TRENDS OVER 13 MONTHS



GREENWICH VILLAGE TWO-BEDROOM PRICE TRENDS OVER 13 MONTHS

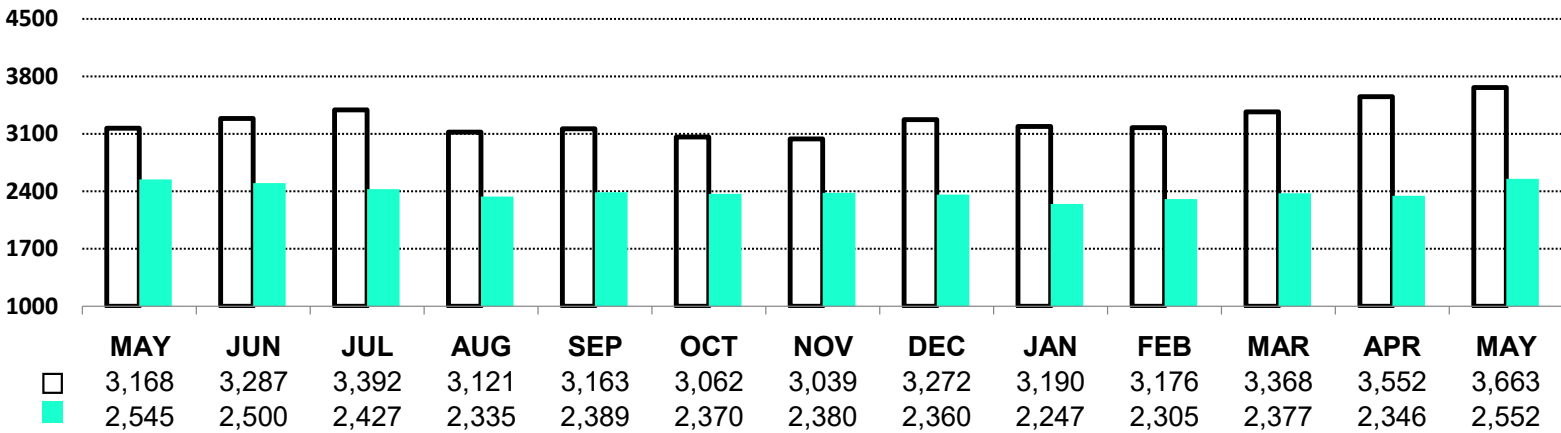


PRICE TRENDS: HARLEM

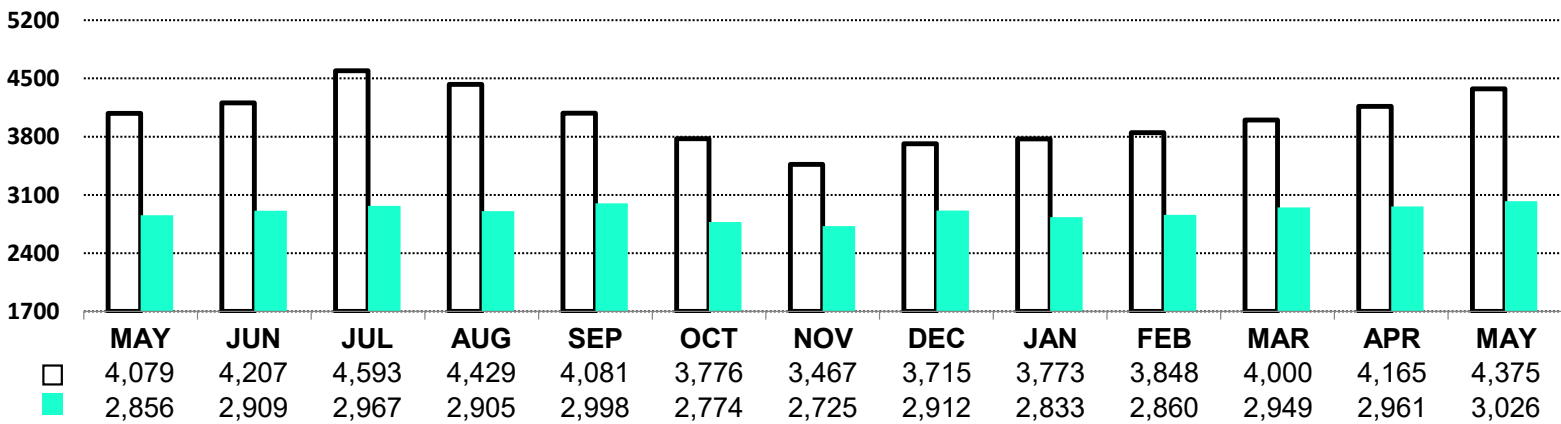
MONTH-OVER-MONTH, DOORMAN RENTS INCREASED BY 2.47%, AND NON-DOORMAN RENTS INCREASED BY 3.44%.

HARLEM STUDIO PRICE TRENDS OVER 13 MONTHS

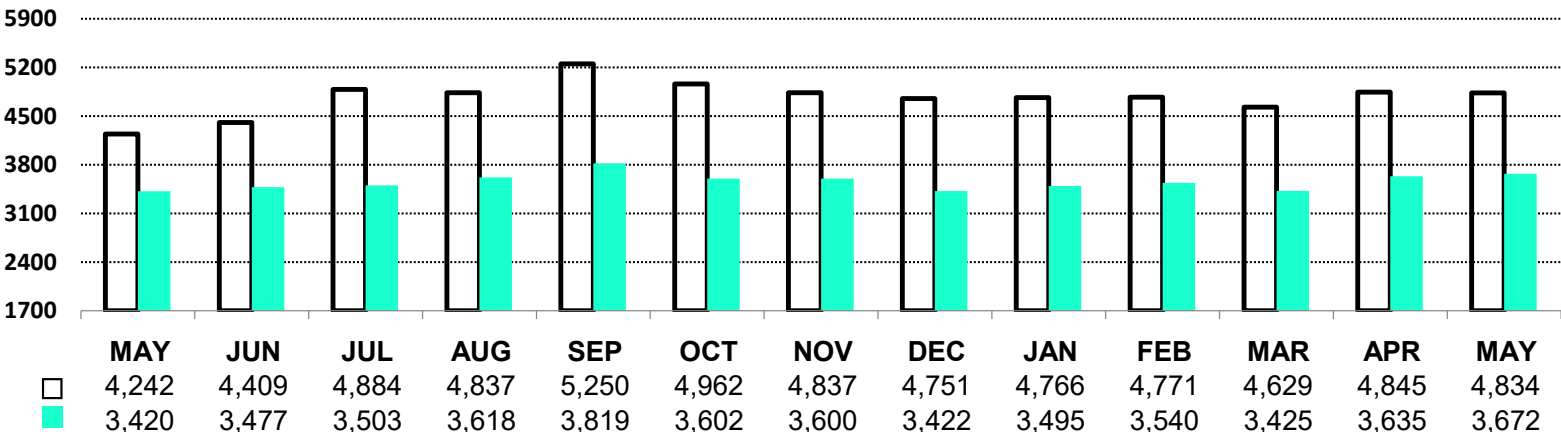
□ DOORMAN
■ NON DOORMAN



HARLEM ONE-BEDROOM PRICE TRENDS OVER 13 MONTHS



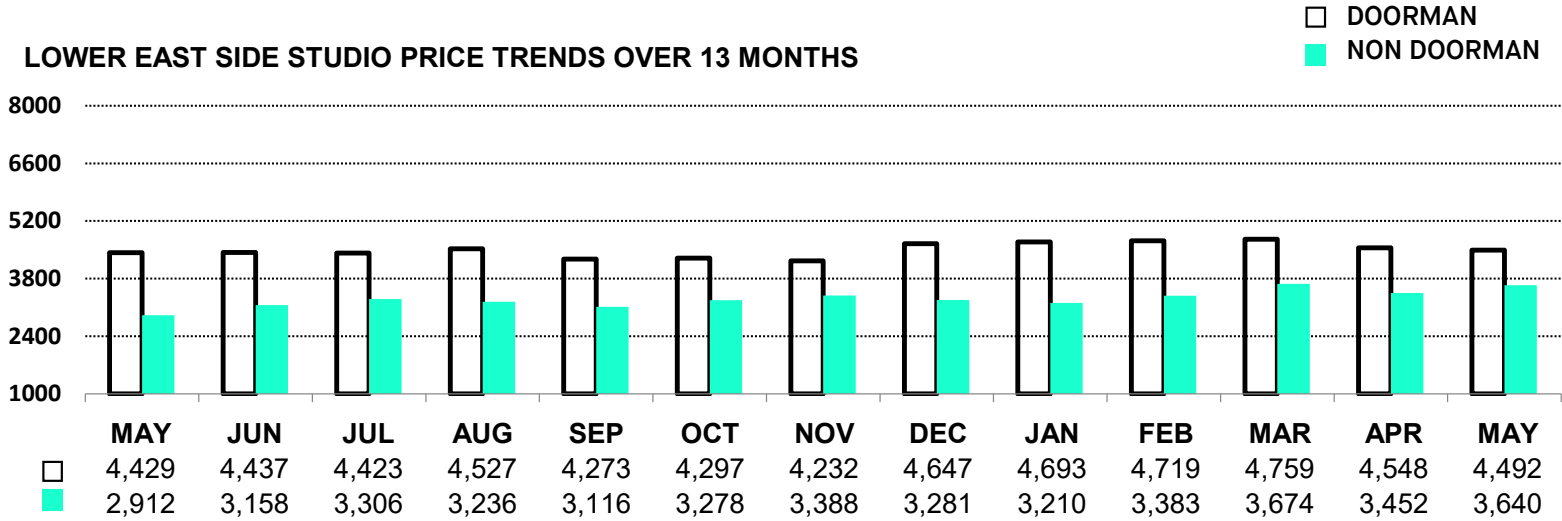
HARLEM TWO-BEDROOM PRICE TRENDS OVER 13 MONTHS



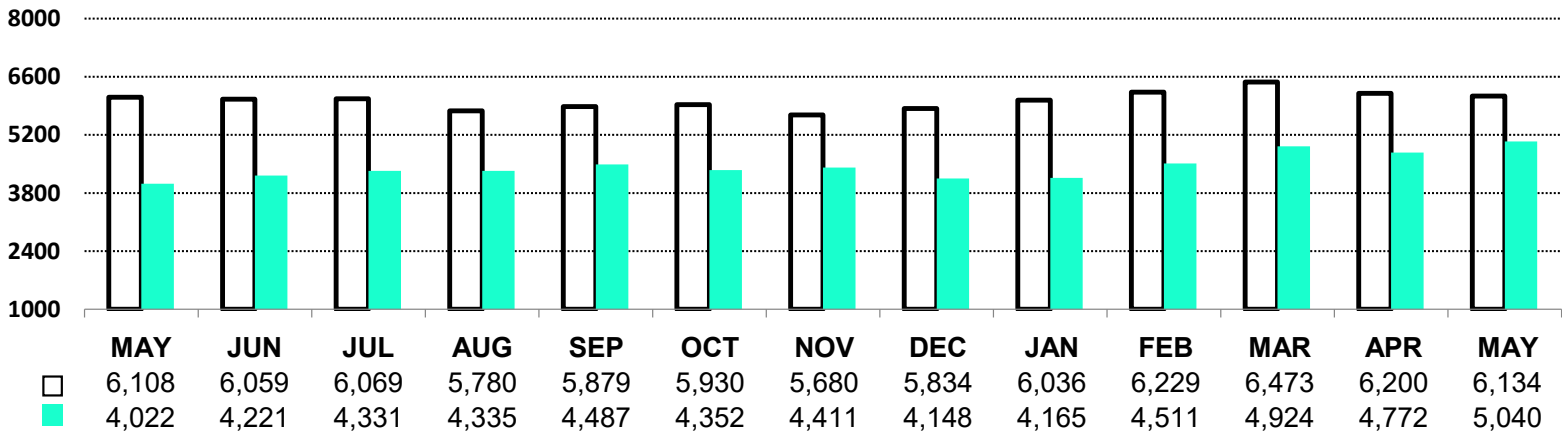
PRICE TRENDS: LOWER EAST SIDE

AVERAGE DOORMAN RENTS INCREASED BY 1.88% SINCE LAST MONTH, AND NON-DOORMAN RENTS INCREASED BY 4.02%.

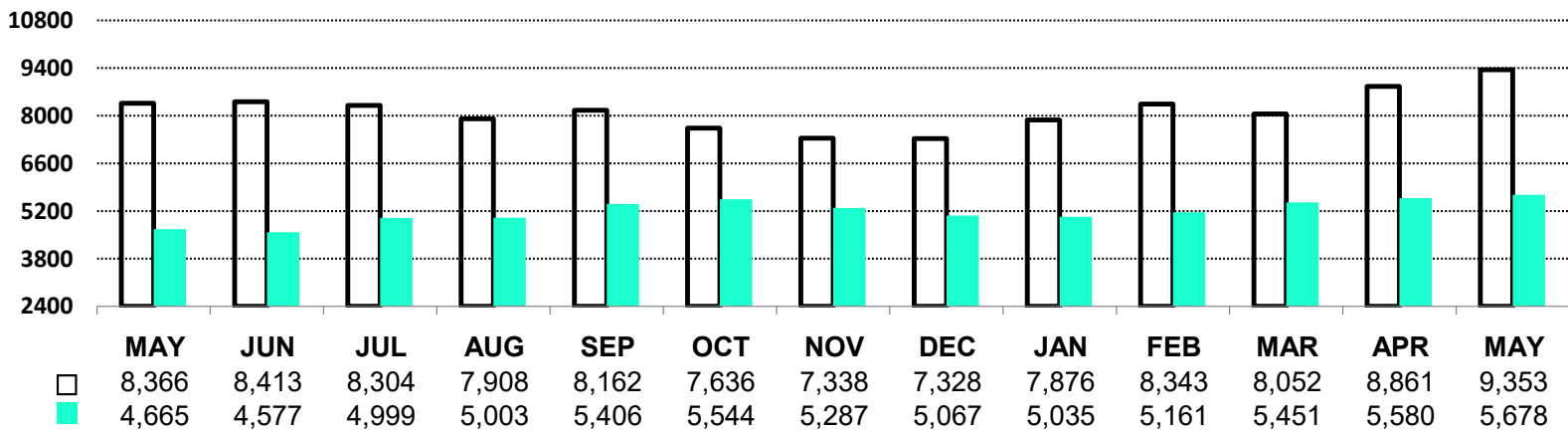
LOWER EAST SIDE STUDIO PRICE TRENDS OVER 13 MONTHS



LOWER EAST SIDE ONE-BEDROOM PRICE TRENDS OVER 13 MONTHS



LOWER EAST SIDE TWO-BEDROOM PRICE TRENDS OVER 13 MONTHS

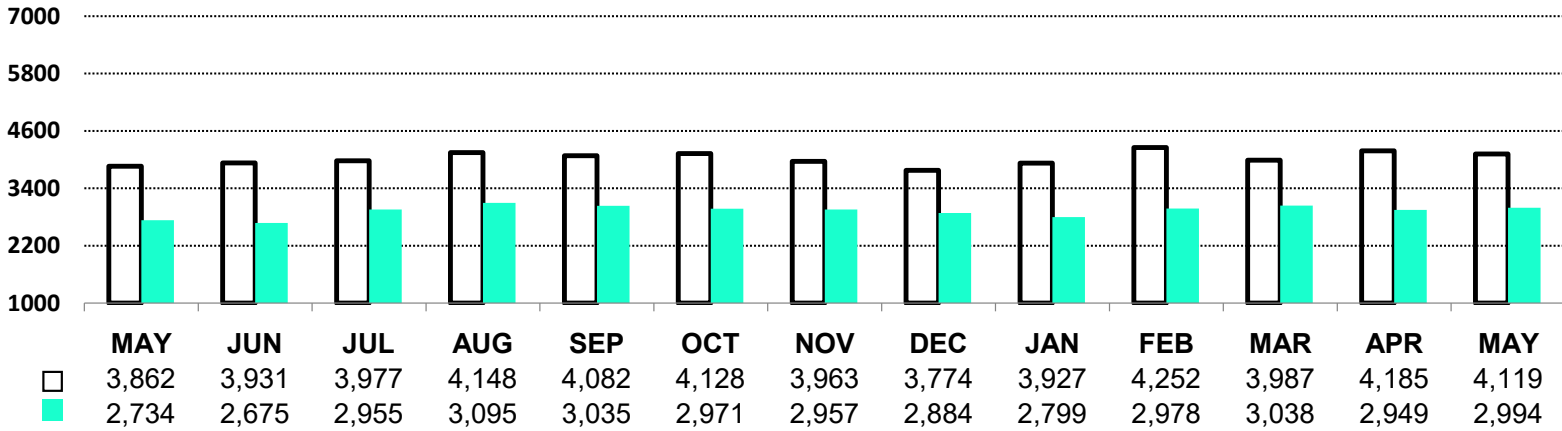


PRICE TRENDS: MIDTOWN EAST

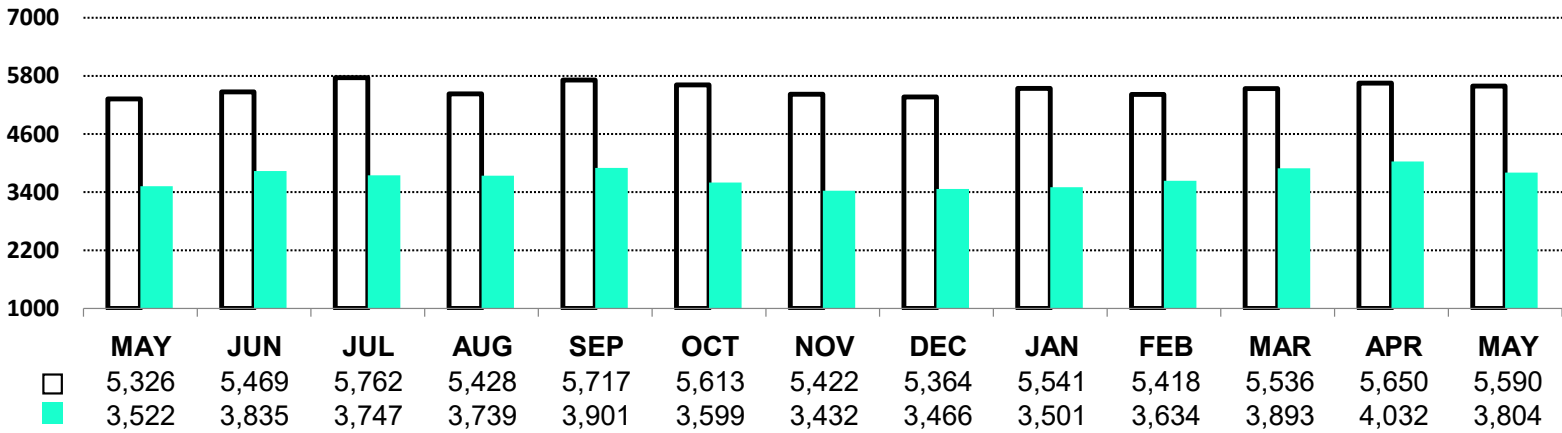
FOR THE MONTH OF MAY, DOORMAN RENTS SLIGHTLY DECREASED BY JUST 0.47%, AND NON-DOORMAN RENTS DECREASED BY 1.29%.

MIDTOWN EAST STUDIO PRICE TRENDS OVER 13 MONTHS

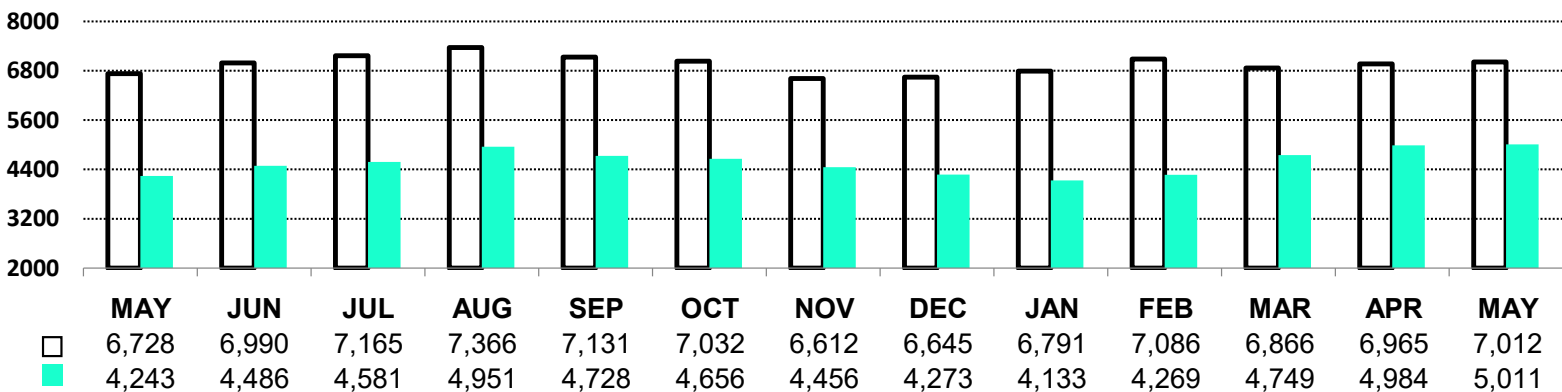
□ DOORMAN
■ NON DOORMAN



MIDTOWN EAST ONE-BEDROOM PRICE TRENDS OVER 13 MONTHS



MIDTOWN EAST TWO-BEDROOM PRICE TRENDS OVER 13 MONTHS

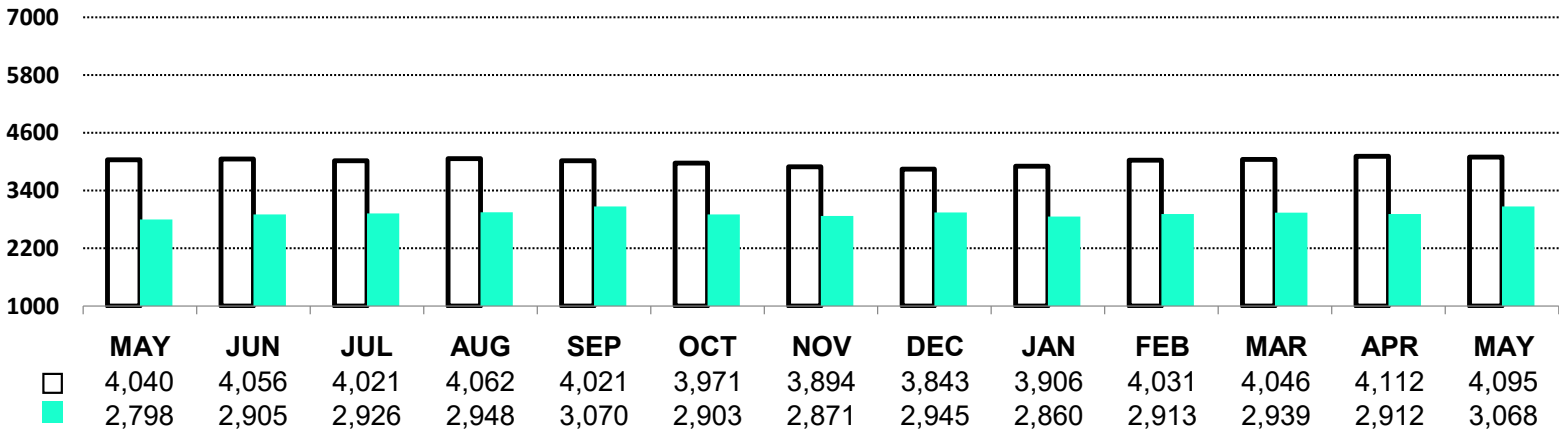


PRICE TRENDS: MIDTOWN WEST

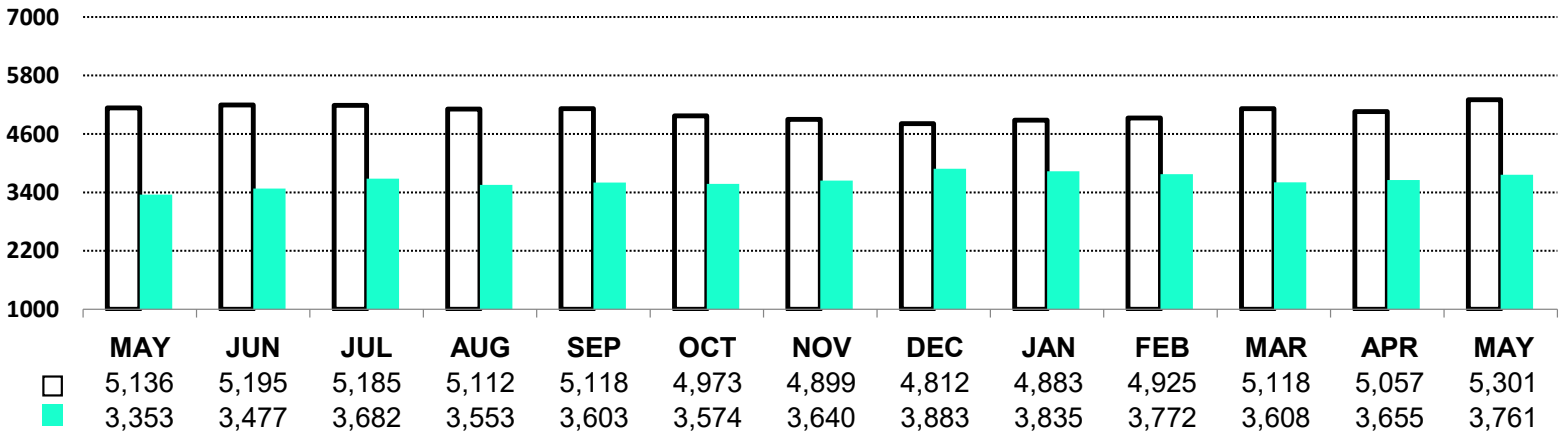
THIS PAST MONTH, THE AVERAGE DOORMAN RENTS SLIGHTLY INCREASED BY JUST 0.55%, WHILE NON-DOORMAN RENTS SLIGHTLY DECREASED BY JUST 0.10%.

MIDTOWN WEST STUDIO PRICE TRENDS OVER 13 MONTHS

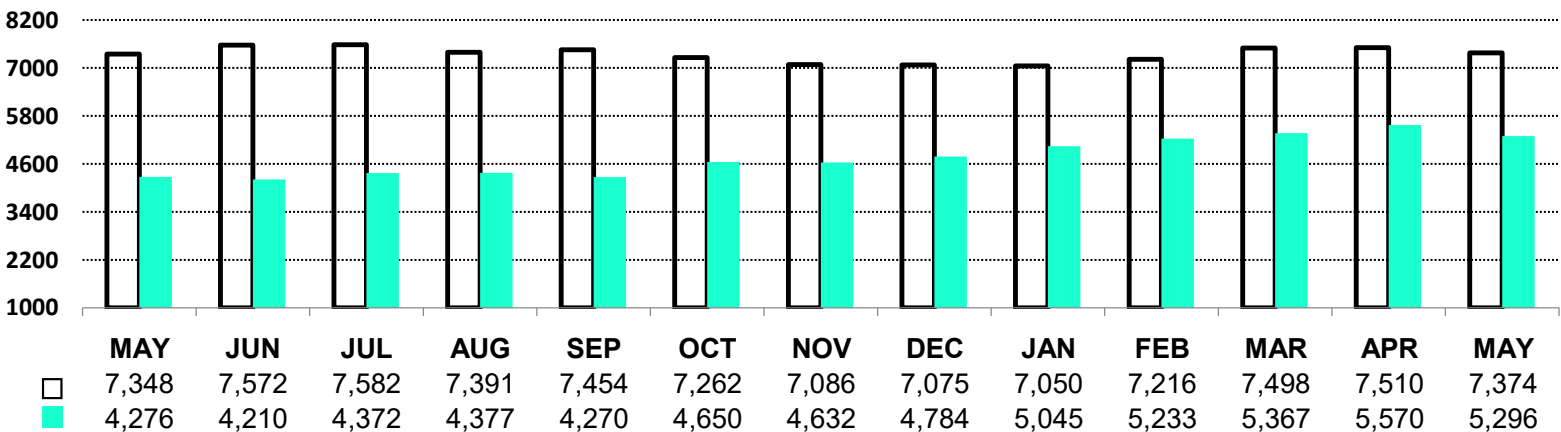
□ DOORMAN
■ NON DOORMAN



MIDTOWN WEST ONE-BEDROOM PRICE TRENDS OVER 13 MONTHS



MIDTOWN WEST TWO-BEDROOM PRICE TRENDS OVER 13 MONTHS

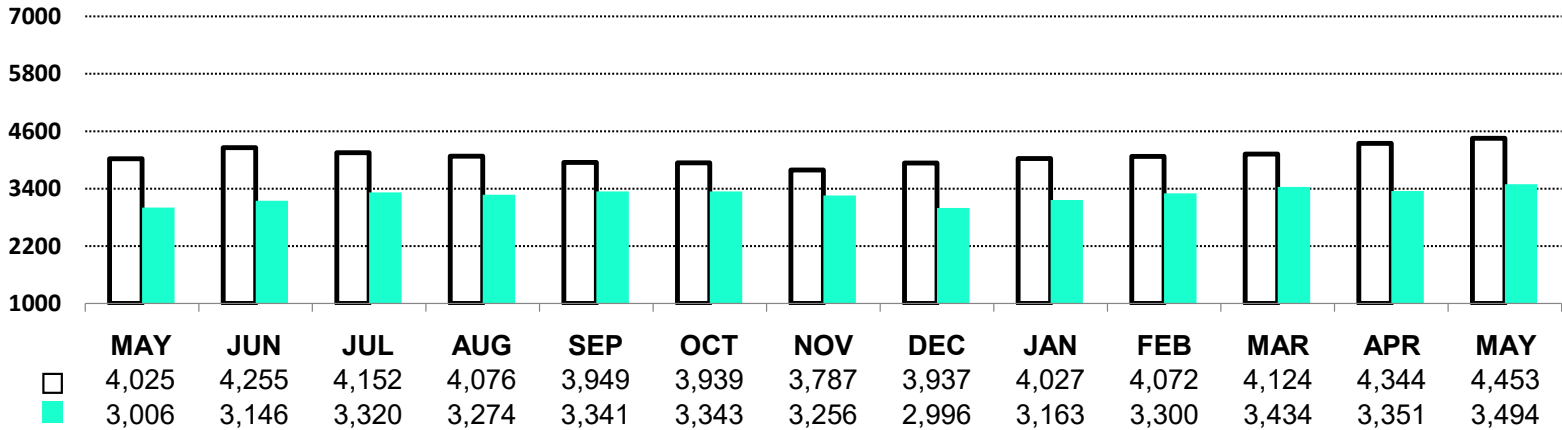


PRICE TRENDS: MURRAY HILL

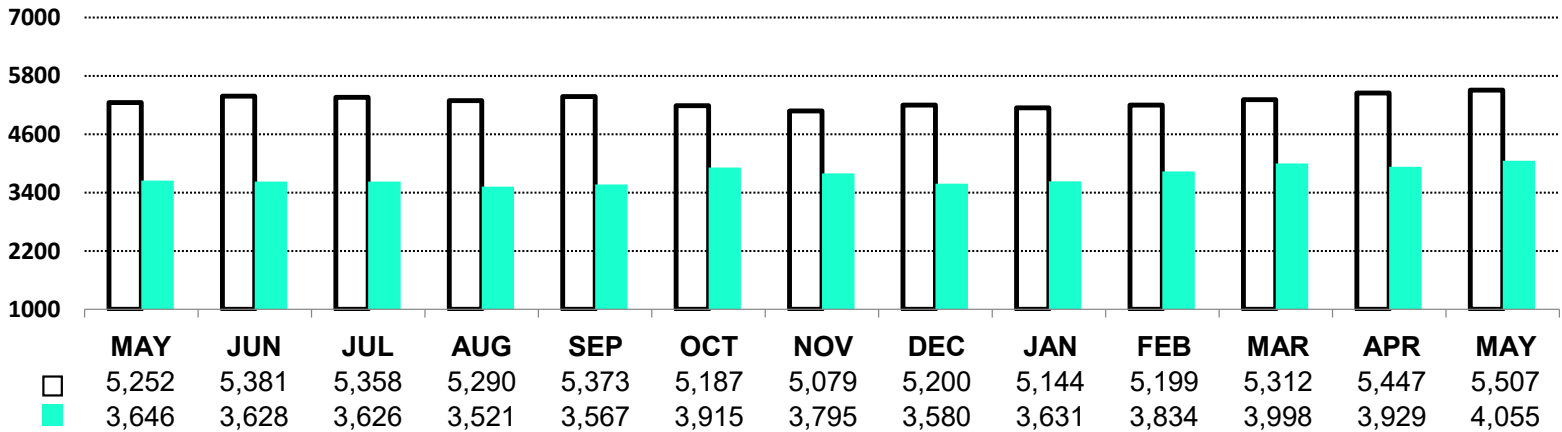
FOR THE MONTH OF MAY, AVERAGE RENTAL PRICES FOR DOORMAN RENTS SLIGHTLY INCREASED BY JUST 0.10%, AND NON-DOORMAN RENTS INCREASED BY 4.46%.

MURRAY HILL STUDIO PRICE TRENDS OVER 13 MONTHS

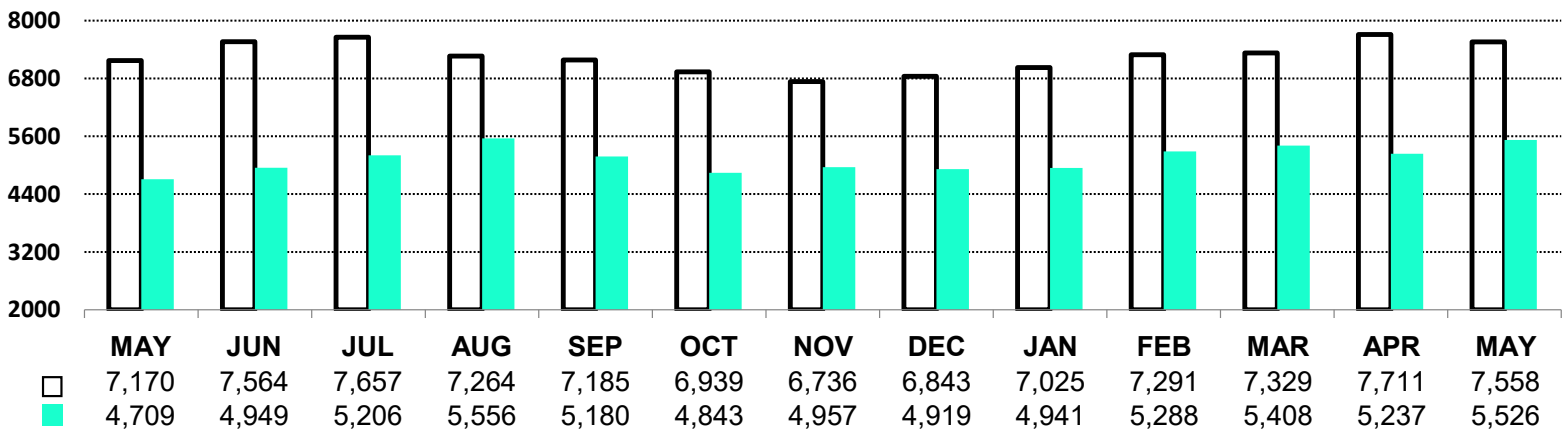
□ DOORMAN
■ NON DOORMAN



MURRAY HILL ONE-BEDROOM PRICE TRENDS OVER 13 MONTHS



MURRAY HILL TWO-BEDROOM PRICE TRENDS OVER 13 MONTHS

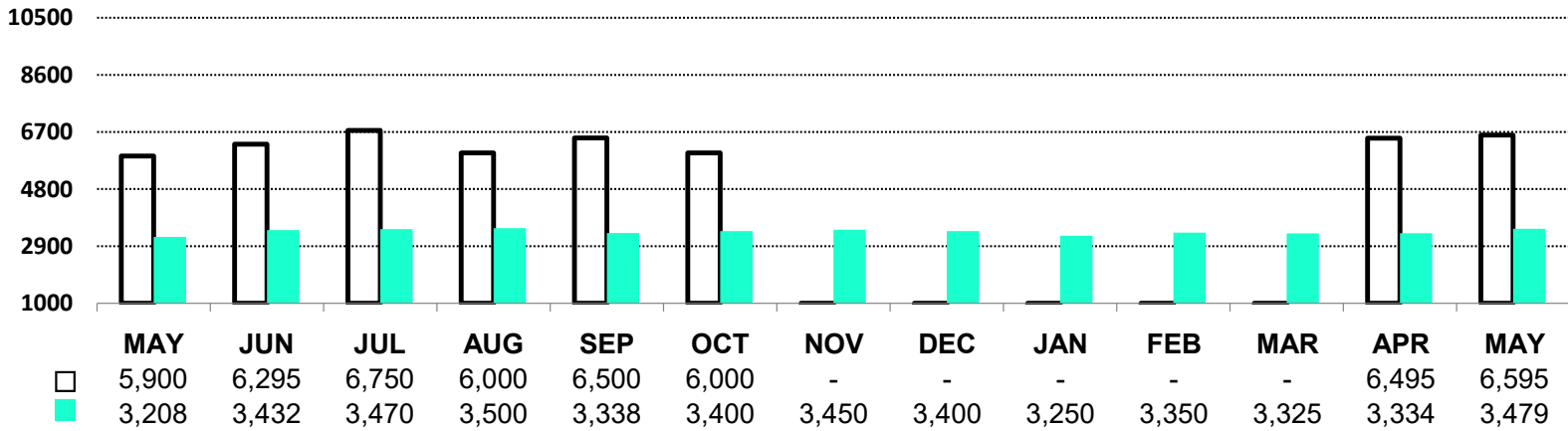


PRICE TRENDS: SOHO

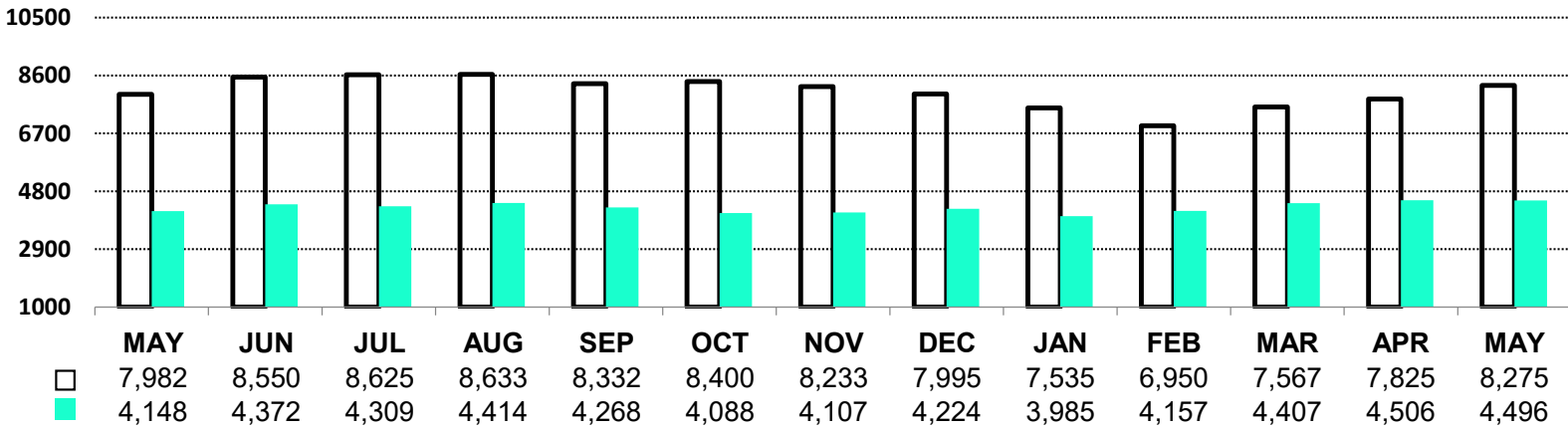
OVER THE PAST MONTH, THE AVERAGE RENTAL PRICE FOR A DOORMAN UNIT INCREASED BY 3.84%, AND NON-DOORMAN RENTS INCREASED BY 1.56%.

SOHO STUDIO PRICE TRENDS OVER 13 MONTHS

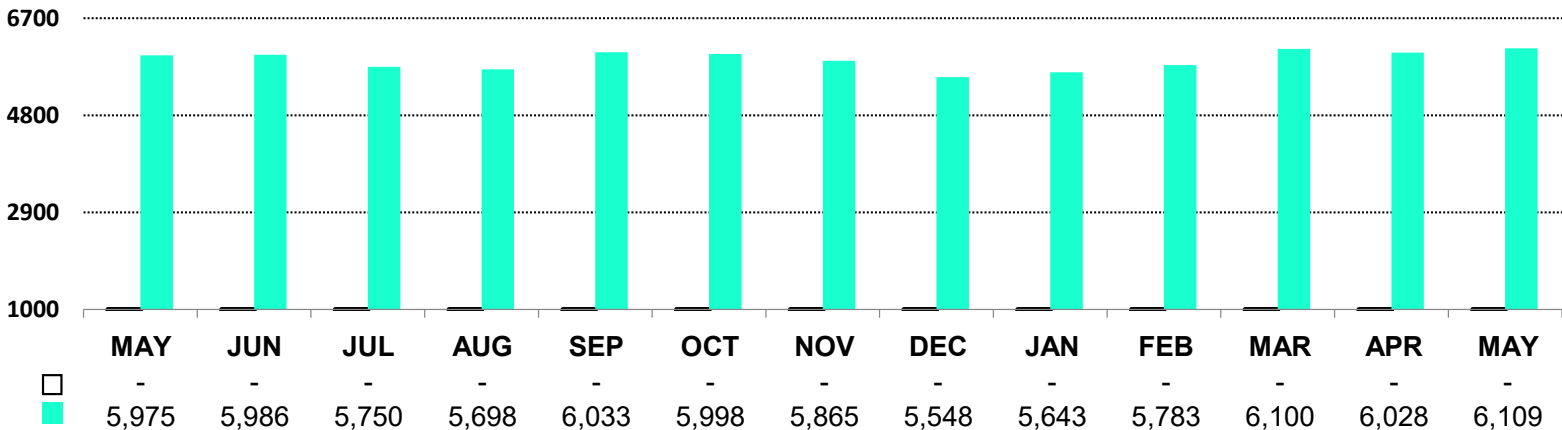
□ DOORMAN
■ NON DOORMAN



SOHO ONE-BEDROOM PRICE TRENDS OVER 13 MONTHS



SOHO TWO-BEDROOM PRICE TRENDS OVER 13 MONTHS

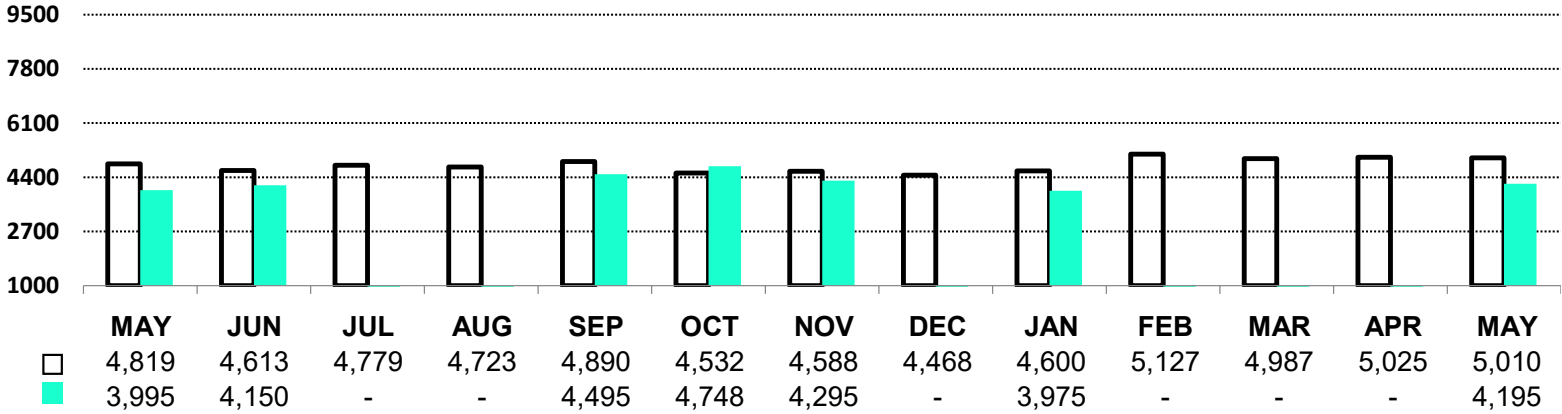


PRICE TRENDS: TRIBECA

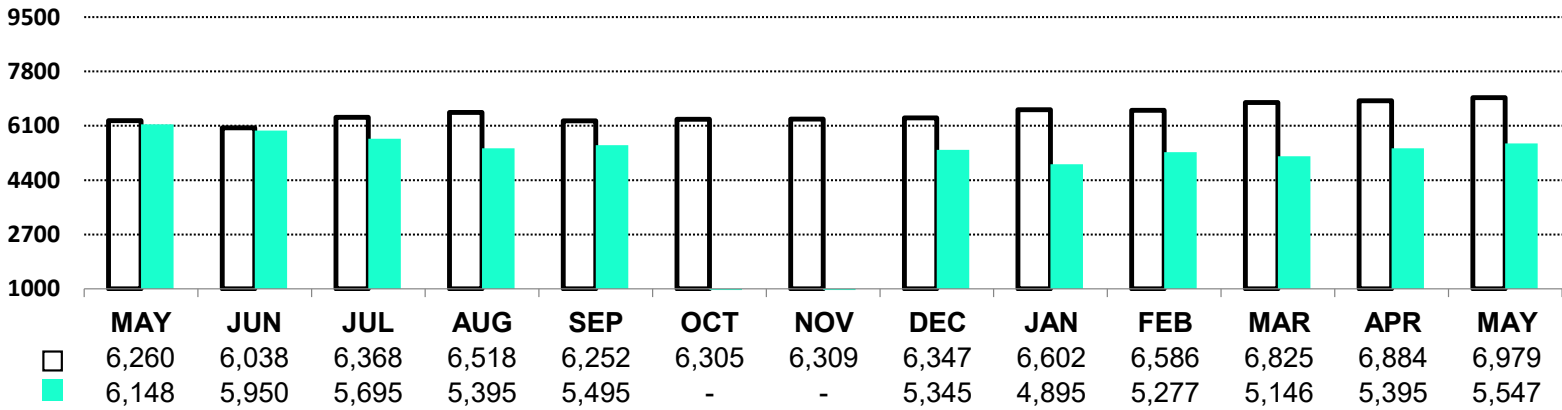
THIS PAST MONTH, THE AVERAGE RENTAL PRICE FOR A DOORMAN UNIT INCREASED BY 1.95%, AND NON-DOORMAN RENTS INCREASED BY 2.53%.

TRIBECA STUDIO PRICE TRENDS OVER 13 MONTHS

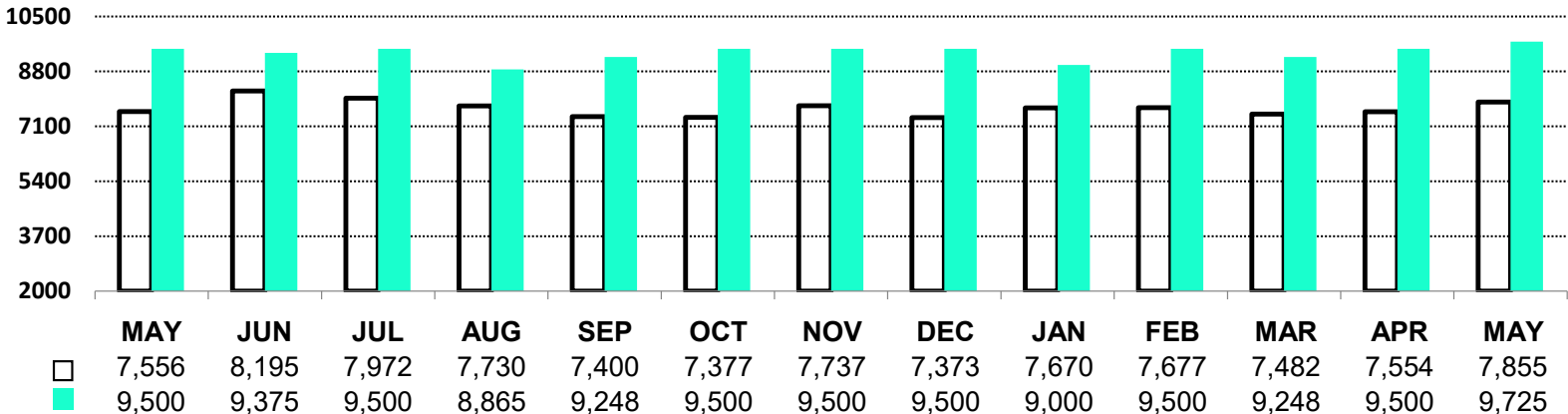
□ DOORMAN
■ NON DOORMAN



TRIBECA ONE-BEDROOM PRICE TRENDS OVER 13 MONTHS



TRIBECA TWO-BEDROOM PRICE TRENDS OVER 13 MONTHS

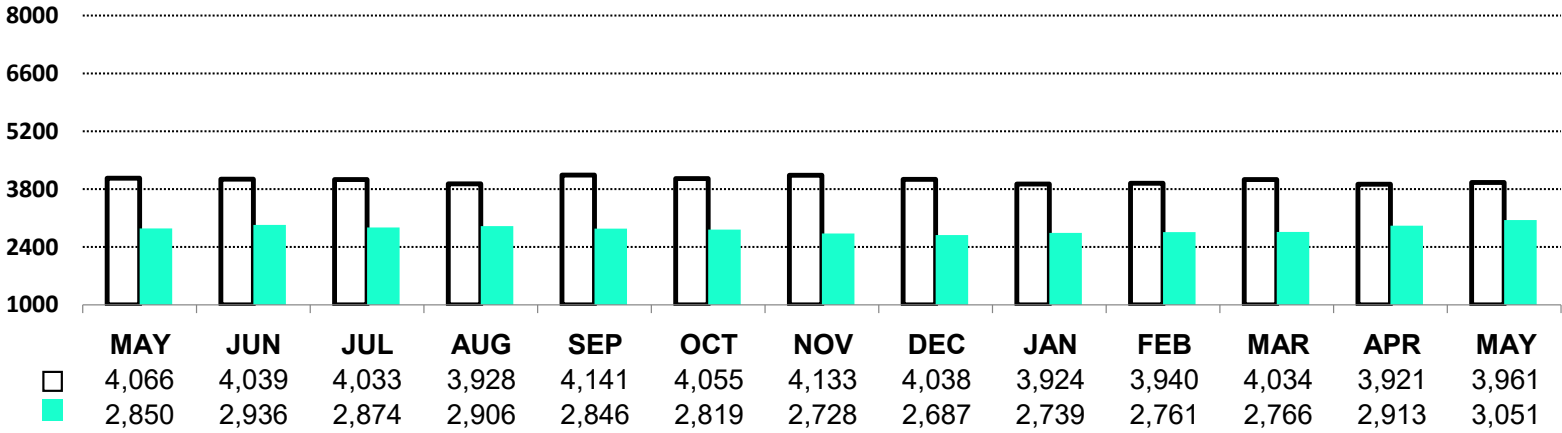


PRICE TRENDS: UPPER EAST SIDE

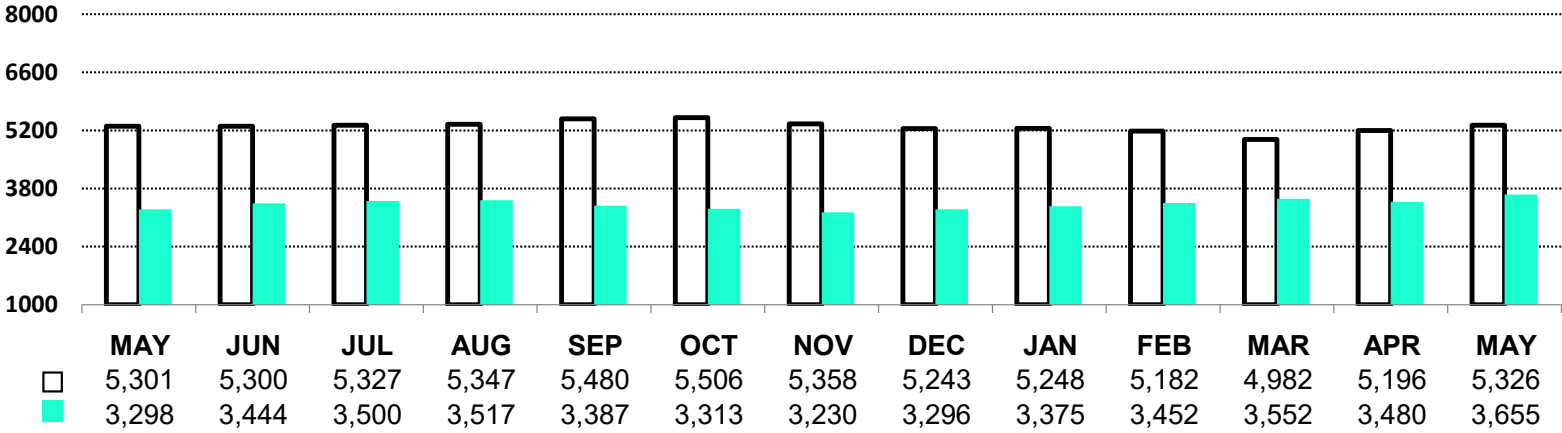
MONTH-OVER-MONTH, AVERAGE DOORMAN RENTAL PRICES HAVE SLIGHTLY INCREASED BY JUST 0.47%, NON-DOORMAN RENTS INCREASED BY 3.41%.

UPPER EAST SIDE STUDIO PRICE TRENDS OVER 13 MONTHS

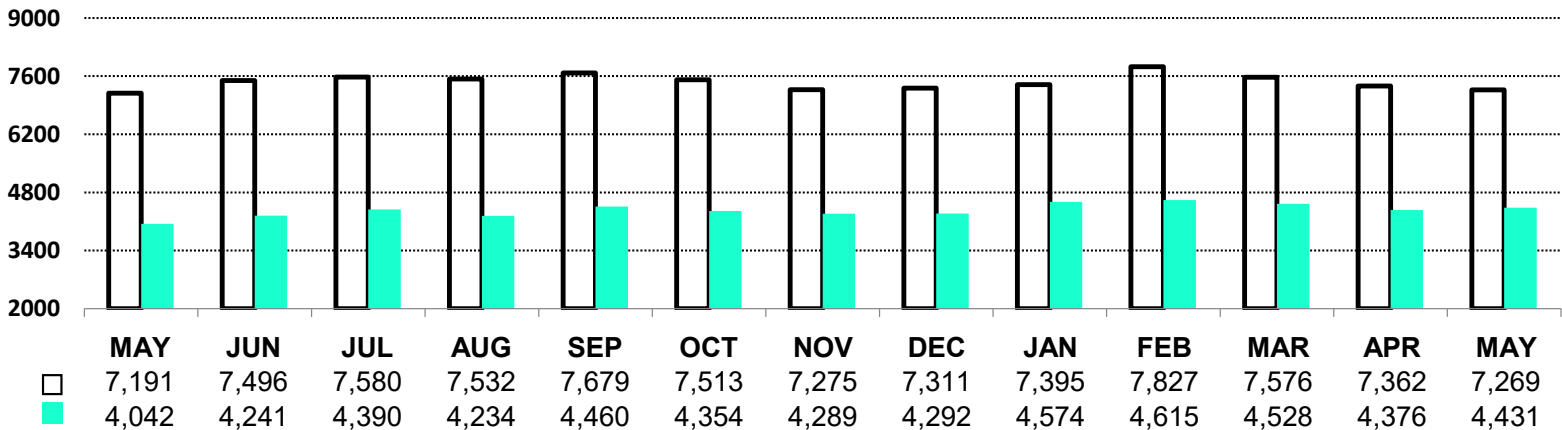
□ DOORMAN
■ NON DOORMAN



UPPER EAST SIDE ONE-BEDROOM PRICE TRENDS OVER 13 MONTHS



UPPER EAST SIDE TWO-BEDROOM PRICE TRENDS OVER 13 MONTHS

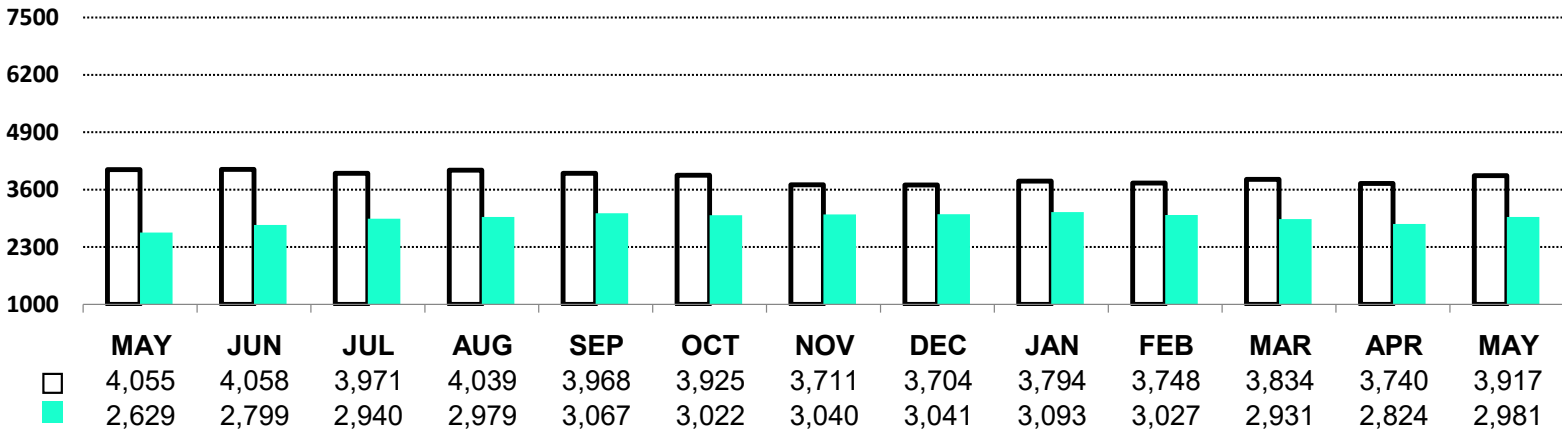


PRICE TRENDS: UPPER WEST SIDE

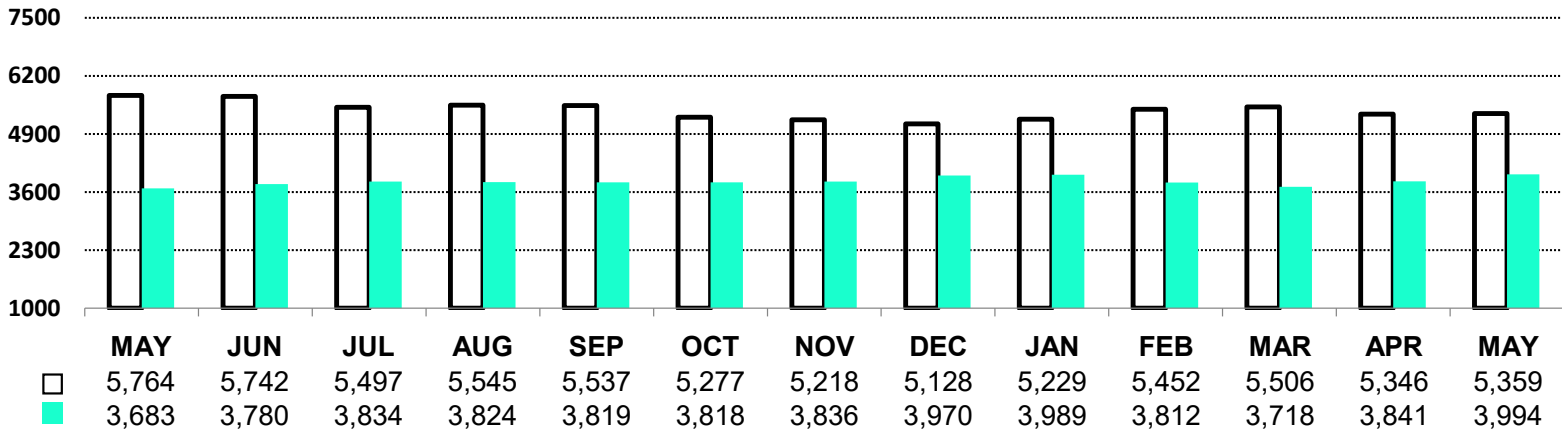
AVERAGE DOORMAN RENTS THIS MONTH HAVE INCREASED BY 3.52%, AND NON-DOORMAN RENTS INCREASED BY 3.95%.

UPPER WEST SIDE STUDIO PRICE TRENDS OVER 13 MONTHS

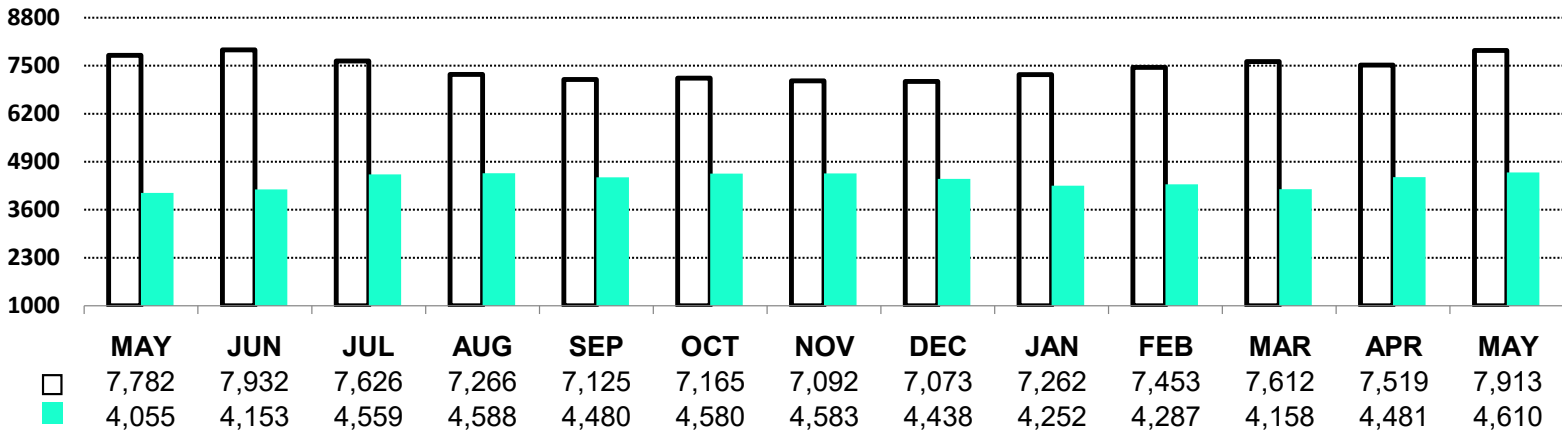
□ DOORMAN
■ NON DOORMAN



UPPER WEST SIDE ONE-BEDROOM PRICE TRENDS OVER 13 MONTHS



UPPER WEST SIDE TWO-BEDROOM PRICE TRENDS OVER 13 MONTHS

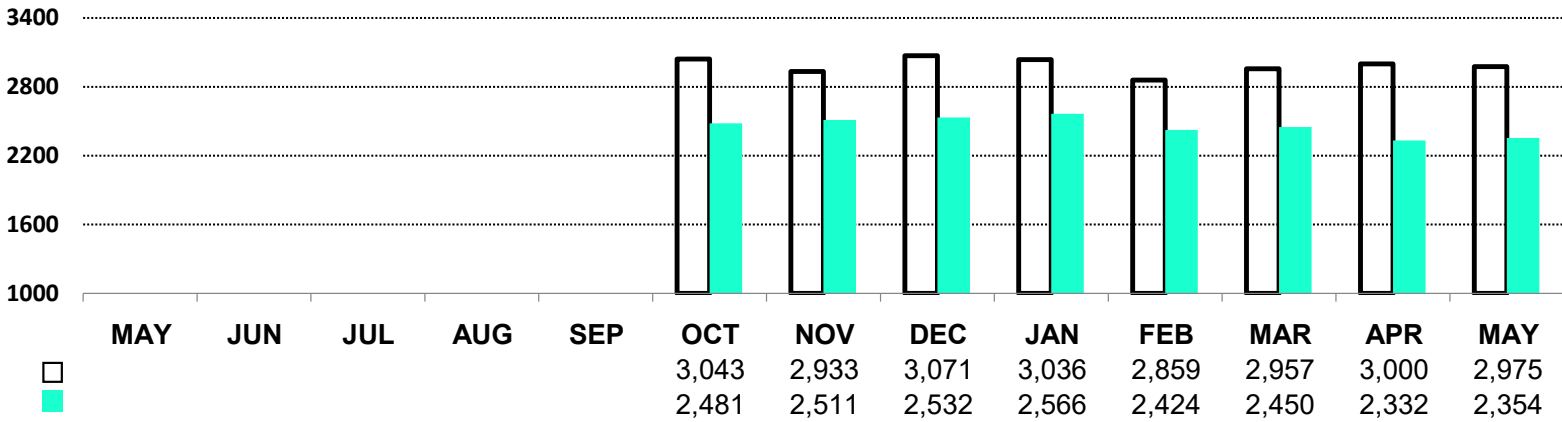


PRICE TRENDS: WASHINGTON HEIGHTS / INWOOD

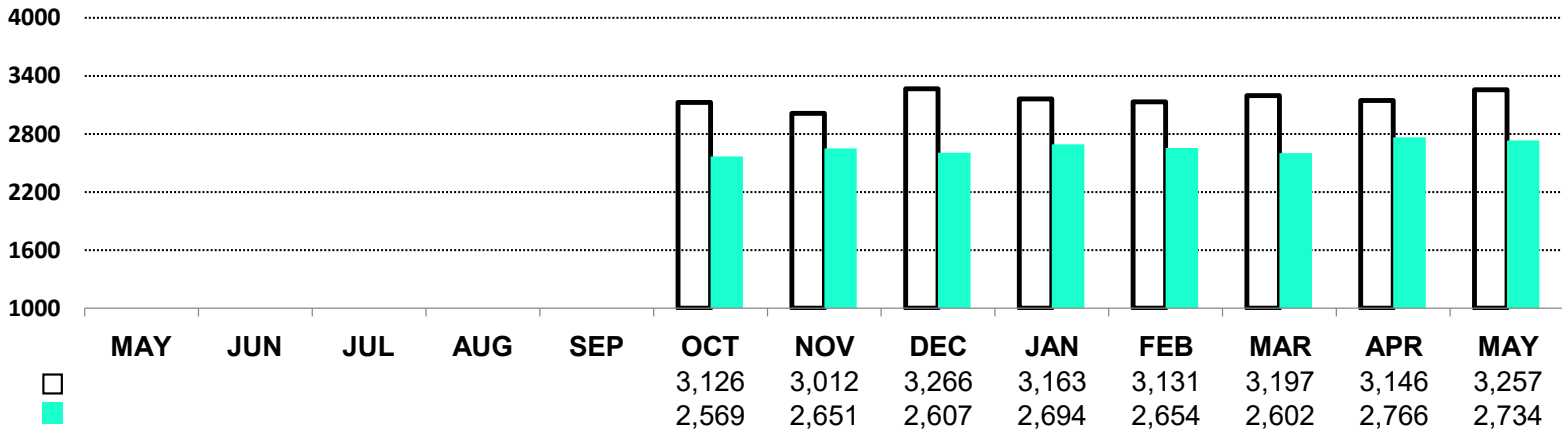
AVERAGE DOORMAN RENTS THIS MONTH HAVE INCREASED BY 2.89%, AND NON-DOORMAN RENTS INCREASED BY 1.21%.

WASHINGTON HEIGHTS / INWOOD STUDIO PRICE TRENDS OVER 13 MONTHS

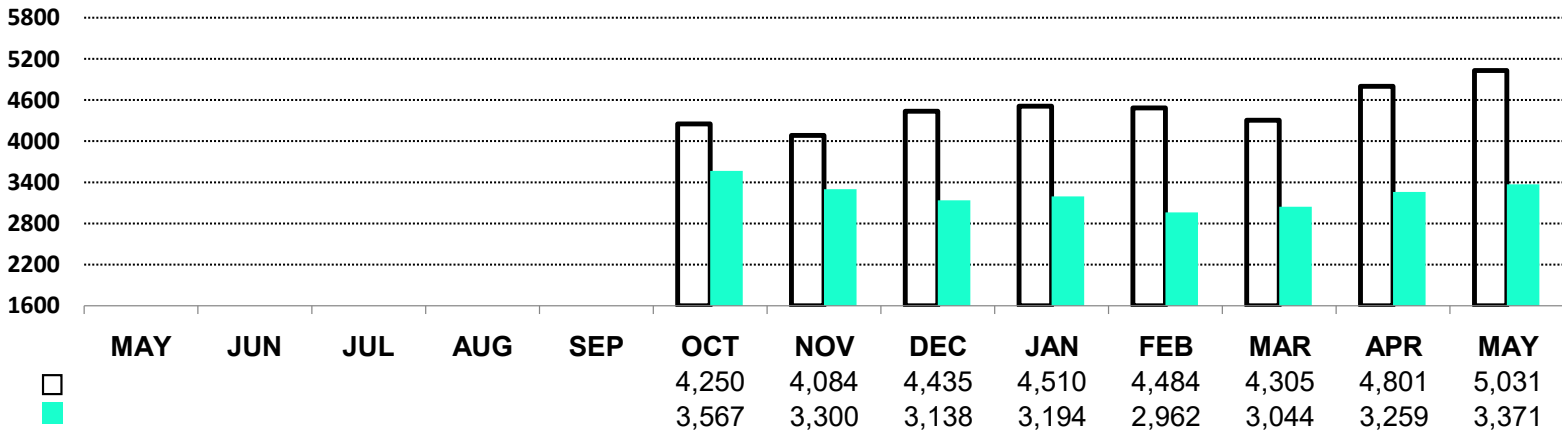
□ DOORMAN
■ NON DOORMAN



WASHINGTON HEIGHTS / INWOOD ONE-BEDROOM PRICE TRENDS OVER 13 MONTHS



WASHINGTON HEIGHTS / INWOOD TWO-BEDROOM PRICE TRENDS OVER 13 MONTHS



THE REPORT EXPLAINED

THE MANHATTAN RENTAL MARKET REPORT COMPARES FLUCTUATION IN THE CITY'S RENTAL DATA ON A MONTHLY BASIS. IT IS AN ESSENTIAL TOOL FOR POTENTIAL RENTERS SEEKING TRANSPARENCY IN THE NYC APARTMENT MARKET AND A BENCHMARK FOR LANDLORDS TO EFFICIENTLY AND FAIRLY ADJUST INDIVIDUAL PROPERTY RENTS IN MANHATTAN.

The Manhattan Rental Market Report is based on data cross-sectioned from over 10,000 currently available listings located below 125th Street and priced under \$10,000, with ultra-luxury property omitted to obtain a true monthly rental average. Our data is aggregated from the MNS proprietary database and sampled from a specific mid-month point to record current rental rates offered by landlords during that particular month. It is then combined with information from the REBNY Real Estate Listings Source (RLS), OnLine Residential (OLR.com) and R.O.L.E.X. (Real Plus).

Author: MNS has been helping Manhattan & Brooklyn landlords and renters navigate the rental market since 1999. From large companies to individuals, MNS tailors services to meet your needs. Contact us today to see how we can help.

Contact Us Now: 718-222-0211

Note: All market data is collected and compiled by MNS's marketing department. The information presented here is intended for instructive purposes only and has been gathered from sources deemed reliable, though it may be subject to errors, omissions, changes or withdrawal without notice.

If you would like to republish this report on the web, please be sure to source it as the "Manhattan Rental Market Report" with a link back to its original location.

[HTTP://WWW.MNS.COM/MANHATTAN_RENTAL_MARKET_REPORT](http://www.mns.com/manhattan_rental_market_report)

THANK YOU

WILLIAMSBURG
40 N 6th St
Brooklyn, NY 11249